



Installation and Wiring Instructions for POPULAR PACK ATTACHMENTS

REFLECTORS & WIRE GUARDS

1. The batten cover plate should be discarded for the trough and angle reflectors.
 2. Assemble the reflectors by utilising the 2 or 4 (as supplied) slide screws.
 3. Insert tubes and test.
- N.B. Conduit should be used to suspend the fitting when the angle reflector is used unless the fitting is ceiling mounted.
4. Mount wire guard as illustrated through slots in reflector using fixings provided.

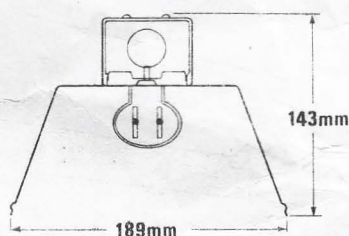


Fig. 1 Series PPR Single metal reflector

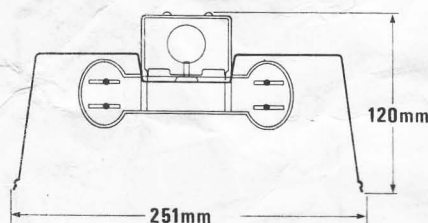


Fig. 2 Series PPR Twin metal reflector

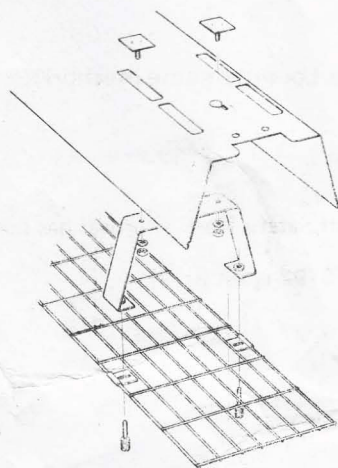


Fig. 3 Assembling Wire Guard to PPR reflectors

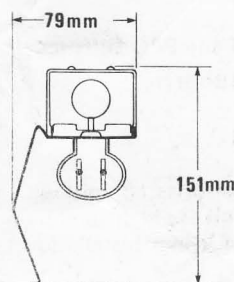


Fig. 4 Series PPA Single metal angle reflector

SINGLE AND TWIN TUBE DIFFUSERS PPC/PPD/PPE/PPL

1. Diffusers are packed complete with springs and end caps. The 8ft. single PPC and PPD diffusers utilise a centre support spring which is packed with the diffuser. (See Fig. 7).
2. Install spine complete with cover plate.
3. Remove end caps from the carton and ensure that springs are firmly located in their lugs (See Figs. 5 and 6).
4. Place the end cap against the back of the lampholder and engage into position. Engagement is onto the neck of the lampholder for the single and by projection lugs on the end cap into recesses in the lampholder moulding for the twin. Secure the end cap into position by easing the spring forward so that it locates in the hole in the cover plate.
5. Insert lamps and test.
6. Diffusers can be installed from one end although the 8ft. may need extra support.
7. Hold diffusers at one end and place into end cap at the opposite end. Ease back the end cap at the near end in direction of arrow (See Figs. 5 and 6). Position diffuser and allow end cap to swing back to locate around the diffuser. Ensure that both end caps are firmly located round the diffuser.

NOTE: An additional spring is supplied with 8ft. PPC and PPD single diffusers. This is assembled to the spine and the diffuser sides are clipped into the tongues as shown in Fig. 7.

NOTE: When diffusers are used as replacement items with the Thorn Surface Pack, end caps and springs should be discarded.

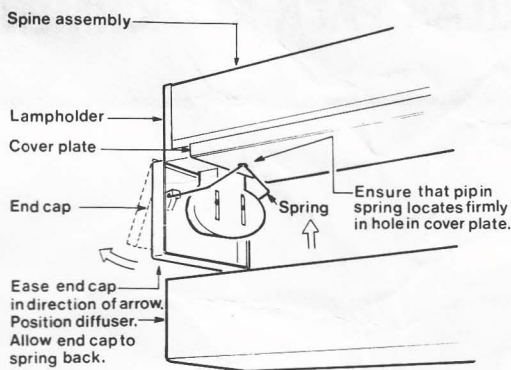


Fig. 5. Single Diffusers

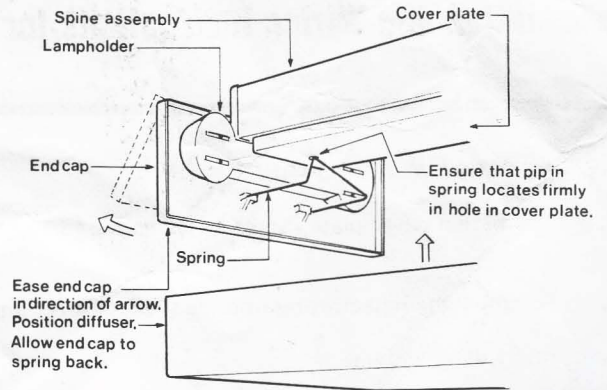


Fig. 6. Twin Diffusers

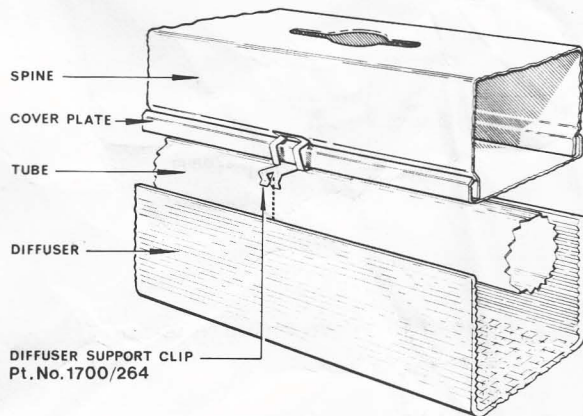


Fig. 7. Single 8ft. PPC and PPD Diffuser
(Not PPE Diffuser)

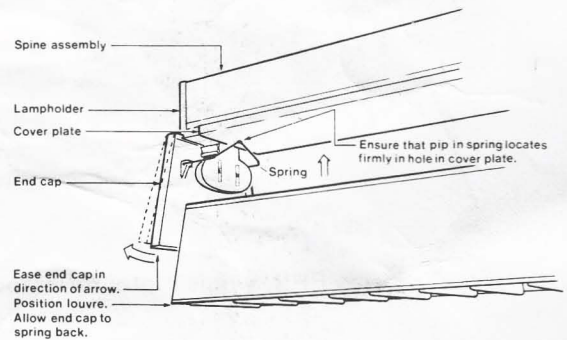


Fig. 8. Single Louvres (same method for twin)

COMPLIANCE WITH BSI

These luminaires and accessories comply with BS4533.2. Luminaires for which Safety Mark approval has been granted by British Standards Institution are identified by a suitable label on the product.
Read in conjunction with Fittings Installation Leaflet inside cover of batten [AT8792 latest issue].