



PHILIPS
LIGHTING

**Comprehensive
Handbook
1980**

**Including
Technical Section**

PHILIPS

Europe's No.1 Lightmaker

COMMERCIAL INCANDESCENT FITTINGS

| | | Page |
|---|----------|------|
| DGN490 Mini Spot | PL1295/2 | 1 |
| DGN491 Mini Spot | PL1832/3 | 3 |
| W9600 Adjustable Spotlight | PL1708/2 | 5 |
| AGS Spotlight System | PL1711/3 | 7 |
| DGN350 Adjustable Spotlight | PL1707/3 | 9 |
| W4001 Dragon Recessed Fitting | PL1707/1 | 11 |
| DGN550 Knuckle Spot System | PL1747 | 13 |
| RCS635 Three Circuit Lighting Track System | PL1795/2 | 15 |
| RCS635 Track Spotlight Fittings | | |
| DRN552, DRN352 and RGS03 | PL1841/1 | 19 |
| Vogue Decorative Glass Range | PL1791 | 23 |
| VCB41/42 Close Ceiling Drum Fitting | PL1706 | 25 |
| VSC21/S & VSS21/S Vogue Spotlights | PL1831/1 | 27 |
| DGN120 Mini Spot | PL1855/1 | 29 |
| Swivel Scoop Downlight Fittings | PL1860/1 | 31 |
| Square Scoop Downlight Fittings | PL1861/1 | 33 |
| Round Scoop Downlight Fittings | PL1862/1 | 35 |
| RCS655 Two Circuit Track System | PL1858/1 | 37 |
| RCS655 Track Spotlight Fittings DRN554, DRN354, RGS06, DRN495, DRN494, DRN124 | PL1857/1 | 41 |





*Royal Doulton Exhibition at the
Victoria & Albert Museum using
RCS 655 Two Circuit Track and
DRN 554 Spotlights.*

CI/SIB
(63.2)UDC
696.6:628.976

MINISPOT DGN 490

40 Watt Adjustable Mini Spotlight

Small spotlight fitting which takes the new R16 lamp giving a well controlled spotlight beam of 40 Watts.

APPLICATIONS

Suitable applications include:

Domestic

- Bedhead lighting
- Pictures
- Work surface lighting
- Mirror lighting
- Localised lighting for reading or sewing

Commercial

- Hotel bedrooms – bedhead console, dressing table
- Reception display areas
- Atmosphere lighting for restaurants
- Jewellers display cabinets
- Local effects in museums and art galleries



Handbook Ref.

1.1.1

To reorder this Data Sheet quote

9.79 PL 1295/2

Replaces

PL 1295/1

FEATURES

- Modern clean line styling ideally suited to contemporary decor.
- Compact and economic light source using the Philips new miniature 40 Watt reflector lamp R16.
- Suitable for wall and ceiling mounting, easily angled having 180° lateral and 90° vertical movement.
- The R16 Reflector lamp provides an excellent spot beam, ideal for domestic and semi display applications.
- A double insulated fitting, requiring only two core cable, no earthing necessary. Fewer connections means easier and cheaper installation.
- The smallness of the R16 lamp enables the fitting to be compact, neat and unobtrusive.
- Polycarbonate used for the base with aluminium lamp shield, finished white or brown. Robust in use.
- Black diaphragm inset to minimise reflected glare.
- Will fit to B.S. wiring box.
- Packed for Retail Trade in blister pack for easy display.
- The KombiPak includes a R16 40W reflector lamp, fixing screws and wall plugs.

MATERIALS & FINISH

Lamp housing and base: white or brown matt finish polycarbonate

Lamp shield: white or brown matt painted aluminium

Baffle: black polyamide

Lampholder: ceramic

Lamp & Fitting: Made in Holland

SPECIFICATION

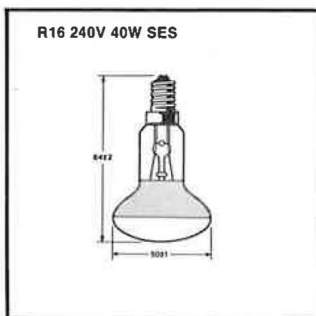
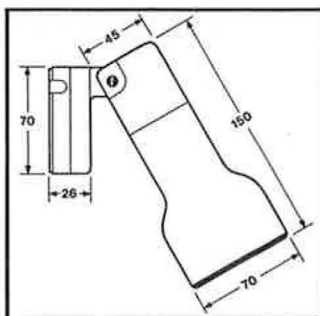
- Type complies with BS4533 and C.E.E. 25
- Class II electrical protection (double insulated)
- VDE Test House approval mark (West Germany)

To specify state:

Miniature double insulated spotlight fitting designed to incorporate a Philips 40W reflector lamp R16.
Philips DGN490 Kombi.

RANGE OF OPERATION

For indoor use on 240V nominal supply.



All dimensions
in mm



KombiPak
for retail trade

ORDERING DATA

| Catalogue No. | Description | Watts | Suitable for lamp types | Outer box qty. |
|--------------------------|--|-------|-------------------------|----------------|
| DGN490/20 Kombi | White Minispot KombiPak complete with lamp and fixings | 40W | R16 | 8 |
| DGN490/42 Kombi | Brown Minispot KombiPak complete with lamp and fixings | 40W | R16 | 8 |
| Replacement lamps | | | | |
| R16 | 240V 40W SES cap reflector lamp | — | — | 25 |

| | |
|--------|---------------|
| CI/SfB | (63.2) |
| UDC | 696.6:628.976 |

DGN 491 MINISPOT

40W adjustable mini spotlight

Small indoor spotlight fitting in white or brown to take the new 40W bowl reflector lamp, complementing the DGN 490 Minispot fitting.

APPLICATIONS

Suitable applications include:

Domestic

- Stereo console lighting
- Bedhead lighting
- Pictures
- Work surface lighting
- Localised lighting for reading, sewing, etc.

Commercial

- Shop window or cabinet display
- Hotel bedrooms – bedroom console and dressing table
- Hotel reception display areas
- Localised spot lighting in museums, art galleries, restaurants and discotheques



Handbook Ref.

1.1.2

To reorder this data sheet quote

9.79 PL1832/3

Replaces

PL1832/2

INCANDESCENT FITTING

FEATURES

- Miniature, clean styling, in conjunction with the new 40W bowl reflector lamp, make the fitting particularly suitable for complementing contemporary decor.
- Excellent field of display, with 180° lateral and 90° vertical adjustment.
- Class II electrical protection (double insulated – no earth required).
- Will fit to B.S. wiring box.
- Controlled narrow beam giving a well defined spot.
- Focussing adjustment gives the user control over the beam angle.
- Blister pack includes 40W bowl reflector lamp, fixing screws and wall plugs.

SPECIFICATION

- Type complies with BS 4533 and CEE 25
- Class II electrical insulation (double insulated)
- VDE Test House approval mark (W. Germany)

To specify state:

Miniature, adjustable, narrow beam spotlight fitting in white or brown polycarbonate taking 40W bowl mirrored lamp. Double insulated. Philips DGN 491 Kombi.

MATERIALS & FINISH

Body and base: White or brown matt-finished polycarbonate

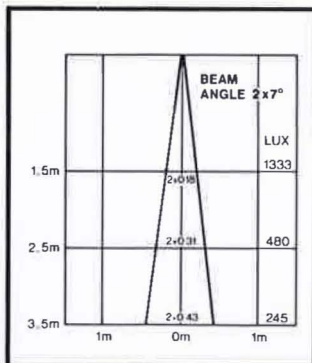
Reflector: Spun aluminium, brightened and anodised inside, white or brown satin finish outside.

Lampholder: Ceramic.

RANGE OF OPERATION

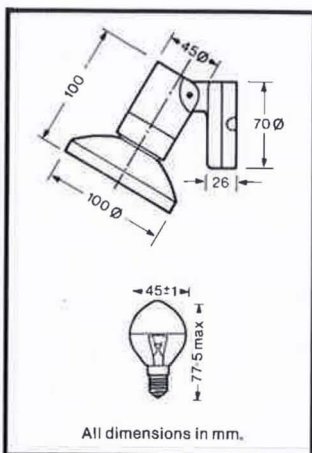
For indoor use on 240V nominal supplies.

BEAM ANGLE* DATA



*Nominal minimum beam angle measured between 50% intensity values.
Peak beam intensity 3000 cd.

DIMENSIONS



KombiPak for Retail Trade

ORDERING DATA

| Catalogue No. | Description | Watts | Suitable for lamp types | Outer Box qty. |
|--------------------------|--|-------|--------------------------------------|----------------|
| DGN 491/20 Kombi | White Minislot KombiPak complete with lamp and fixings | 40W | 240/250V 40W SES Bowl Reflector Lamp | 8 |
| DGN 491/42 Kombi | Brown Minislot KombiPak complete with lamp and fixings | 40W | 240/250V 40W SES Bowl Reflector Lamp | 8 |
| Replacement Lamps | | | | |
| 240/250V 40W SES | Bowl Reflector Lamp | — | — | 25 |

Please order in multiples of the box quantity.

Made in Holland.

CI/SIB
(63.2)

UDC

696.6:628.976

W9600 ADJUSTABLE SPOTLIGHT

**Indoor display fitting for
reflector, pressed glass
and bowl reflector lamps**

The W 9600 together with its many attachments and forms provides a versatile range of display lighting in the traditional turned aluminium finish.

RANGE

The basic fitting is available in surface mounted (W 9600) or clamp version (W 9605) with the following attachments:

W 9601 Clear parabolic reflector for 100 Watt Bowl Reflector lamps.

W 9602/3/4 as above with Red, Yellow and Blue finish.

W9622 Screening ring. Use for eliminating sideways glare. Clips onto PAR 38 lamp.

APPLICATIONS

Applications include:

- Shop window display
- Bars, Pubs and Clubs
- Discotheques
- Boutiques
- Exhibitions
- Museums
- Churches



Handbook Ref.

1.1.3

To reorder this data sheet quote 9.79 PL 1708/2

Replaces

PL 1708/1

FEATURES

- Philips focussing ring enables bowl reflector lamps in their parabolic reflectors to be focussed easily with one hand, allowing the size of the light-patch to be varied.
- The fitting can be rotated through 350° in the horizontal and 90° in the vertical giving a wide field of display.
- Robust design, with the long life knuckle joint which does not require locking.
- Attractive aluminium finish which blends with most decors.
- Will fit to B.S. wiring box.
- W9600 wired with two heat resistant leads with earth point on base plate.
- W9605 supplied with 2m flexible cable.

SPECIFICATION

- Type complies with BS 4533
- Class I Insulation (earth required).
- Easily adjustable spotlight fitting with alternate G-clamp version.
- Sturdy all aluminium construction with extruded barrel housing a ceramic E.S. lampholder pre-wired with silicone rubber insulated 0.75mm² conductors.

To specify state:

Fully adjustable aluminium display fitting with a range of clip-on accessories. The lampholder position within the barrel to be adjustable by means of a rear focussing ring, Philips W 9600 series.

DIMENSIONS, WEIGHTS & ELECTRICAL DATA

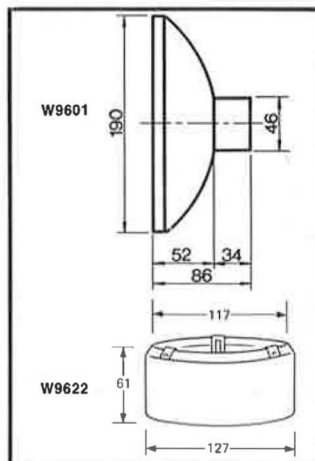
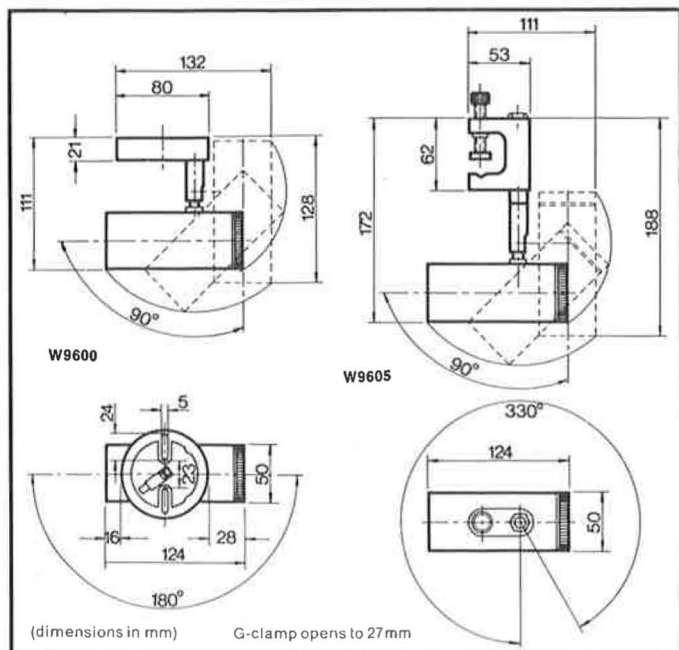
Weight of basic unit (less lamp) = 0.305 kg approx.

W 9600 fixing slots suit B.S. Boxes.

The base will cover a B.S. Box.

Accepts E.S. capped reflector lamps up to 150 Watts (excluding dichroic "Cool-Beam" types) and takes the E.S. 100 Watt Bowl reflector lamp used with reflector attachment.

The fitting must be earthed.



MATERIALS & FINISH

Basic unit and reflectors: turned aluminium

Lampholder: ceramic

Screening ring: black aluminium

RANGE OF OPERATION

For indoor use only on 240V nominal supplies.

Lamp: PAR 38 (Holland), R20, R30, R40, Bowl Reflector (U.K.).

Fitting: Holland.

ORDERING DATA

| Type No: | Description | Max. Watts | Suitable for Lamp types | Box Qty. | To order please quote: |
|----------|------------------|------------|-------------------------|----------|------------------------|
| W 9600 | Basic Unit | 150* | PAR 38, R20, R30, R40 | 4 | 021307 |
| W 9601 | Clear Reflector | 100 | Bowl Reflector | 4 | 021404 |
| W 9602 | Red Reflector | 100 | Bowl Reflector | 4 | 021417 |
| W 9603 | Yellow Reflector | 100 | Bowl Reflector | 4 | 022762 |
| W 9604 | Blue Reflector | 100 | Bowl Reflector | 4 | 022775 |
| W 9605 | Clamp Fitting | 150* | PAR 38, R20, R30, R40 | 4 | 022555 |
| W 9622 | Screening Ring | 100 | PAR 38 | 4 | 022652 |
| W 9623 | Red Filter | 100 | PAR 38 | 4 | 022665 |
| W 9624 | Blue Filter | 100 | PAR 38 | 4 | 022678 |
| W 9626 | Green Filter | 100 | PAR 38 | 4 | 022681 |
| W 9627 | Yellow Filter | 100 | PAR 38 | 4 | 022694 |

*excluding "Cool-Beam".

CI/SIB

(63.2)

UDC

696.6:628.976

AGS SPOTLIGHT SYSTEM

A system of indoor spotlight fittings designed to be used with a wide range of blown bulb and pressed glass reflector lamps

A comprehensive system of matching units which provides a wide variety of lighting effects combined into one family image. Flexibility of application and strong design combine to make this a formidable range.

RANGE

AGS 20 — White basic unit with detachable collar for use with 100/150W PAR 38 pressed glass lamps.
 AGS 42 — Brown basic unit as above.
 GGS 01 — Screening shield for R20 lamps (60W reflector lamps).
 GGS 02 — Screening shield for R30 lamps (100W reflector lamps).
 GGS 04 — Parabolic reflectors for 100W bowl reflector lamps.
 W9622 — Black screening ring attachment to PAR 38 lamps.

APPLICATIONS

Applications are:

- Shop window display
- Hotel reception areas — picture lighting, highlighting island display areas and plant groupings
- Museums and Art Galleries
- Entrance halls and foyers of offices, flats, public buildings, concert halls
- Domestic spotlighting in the R20 version
- Prestige areas e.g. Boardrooms, Directors dining rooms, visitors exhibition areas



Handbook Ref.

1.1.4

To reorder this data sheet quote

9.79 PL 1711/3

Replaces

PL 1711/2

FEATURES

Smart modern styling is ideally suited to contemporary decors.

■ A knurled ring on the body enables one handed fine focussing of the GGS 04 reflector, allowing any spot beam angle between 16° and 24° (50% intensity values) to be chosen.

■ The screening shields incorporate a grooved diaphragm to reduce sideways glare from the inside of the shield.

■ Suitable for wall or ceiling mounting. The fitting can rotate through 325° horizontally and 90° vertically giving an excellent field of display.

■ Body of fitting is made from polycarbonate which is very robust (as used in vandal-proof fittings).

■ Double insulated. Does not require earthing.

■ Will fit to B.S. wiring box.

■ Basic unit is supplied in a blister pack, as an aid to retail selling.

■ Screening ring.

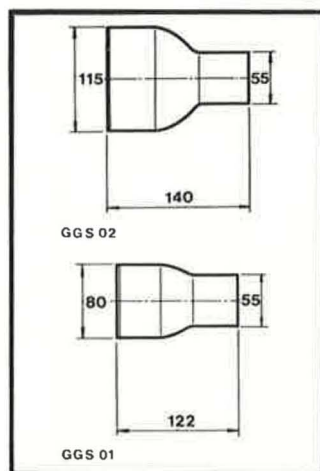
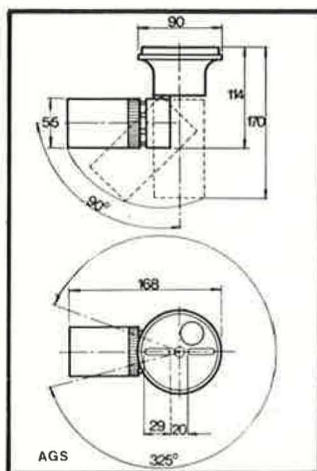
SPECIFICATION

■ Type complies with BS 4533

Class II electrical protection. (Double insulated.)

To specify state:

Double insulated, adjustable fitting to BS 4533 2:2 standard, suitable for reflector lamps up to 150W with provision for focussing 100W bowl reflector lamps, or enclosing reflector lamps up to 100W by means of accessories, Philips AGS.



MATERIALS & FINISH

Basic unit: Makrolon (polycarbonate)

PAR 38 collar: Aluminium

R20 & R30 shields: Aluminium with black polyamide anti-glare diaphragm

Parabolic reflector: Brightened hammer-finish aluminium with black internal rim; smooth, white or brown finish to rear.

Lampholder: Ceramic ES type.

RANGE OF OPERATION

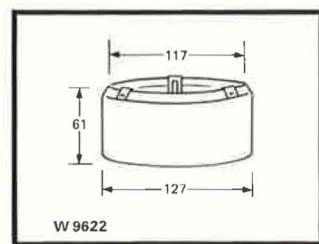
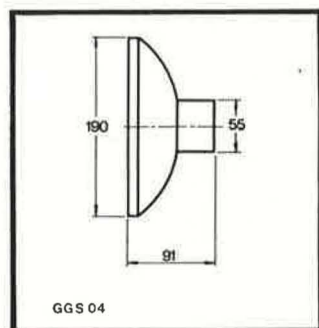
For indoor use.

Not suitable for 'Cool spot' PAR 38 lamps.

WEIGHT & ELECTRICAL DATA

For 100-240V nominal supply. Maximum 150 watts. 2 amps.

Weight: 0.22 kg.



ORDERING DATA

| Catalogue number | Description | Watts | Suitable for lamp types | Box Qty. |
|------------------|----------------------------------|-------|-------------------------|----------|
| AGS 20 | Basic Unit White (ES Lampholder) | 150 | PAR 38* | 8 |
| AGS 42 | Basic Unit Brown (ES Lampholder) | 150 | R20, R30 | 8 |
| GGS 01/20 | R20 Shield White | 60 | R20 | 4 |
| GGS 01/42 | R20 Shield Brown | 60 | R20 | 4 |
| GGS 02/20 | R30 Shield White | 100 | R30 | 4 |
| GGS 02/42 | R30 Shield Brown | 100 | R30 | 4 |
| GGS 04/301 | 100W Reflector White/Clear | 100 | Bowl Reflector | 4 |
| GGS 04/304 | 100W Reflector White/Yellow | 100 | Bowl Reflector | 4 |
| GGS 04/501 | 100W Reflector Brown/Clear | 100 | Bowl Reflector | 4 |
| W9622 | PAR 38 Screening Ring Black | 150 | PAR 38* | 4 |

*excluding 'Cool spot'.

Note: Lamps should be ordered separately

Lamp: R20, R30, Bowl reflector (U.K.).
PAR 38 (Holland).

Fitting: Holland.

DGN350

Basic adjustable spotlight

Indoor display fitting for use with PAR 38 reflector lamps and 60 watt bowl reflector lamps

A simple modern spotlight fitting designed for use with PAR 38 lamps and with the addition of a reflector for 60 watt bowl reflector lamps.

RANGE

DGN 350/20 White basic unit,
DGN 350/40 Black basic unit,
DHN 350/40/W Black clamp unit,
DHN 350/20/W White clamp unit,
ZZZ 350/00 Aluminium reflector for
60 watt bowl reflector lamps.
W9622 Black screening ring (for use
with PAR 38 lamps).

APPLICATIONS

Main application as a simple, economical and functional spotlight for use in:

- exhibitions
- displays
- public buildings and halls
- shops.
- home workshops
- domestic spotlighting

DGN350/20 with aluminium reflector and 60 watt bowl reflector lamp

Handbook Ref.

1.15

To reorder this Data Sheet quote 9.79 PL 1707/3

Replaces

PL 1707/2

FEATURES

■ A clean, simply styled fitting with compact lines providing effective lighting at low cost. Modern functional design moulded in polycarbonate.

■ Double insulated, needing no earthing connections. Simple two core wiring means less connections, saving time and making installation easier. Ideally suited for use with existing wiring, where no earth wiring is present.

■ Will fit to B.S. wiring box.

■ Fully adjustable, giving excellent field of movement for display lighting. 260° rotation on the horizontal plane and 85° on the vertical.

■ ES lampholder will accept most types of display lamps giving great versatility in use, from PAR 38 reflector lamps with screening rings to aluminium reflectors for use with 60 watt bowl reflector lamps.

■ Ribbed collar is detachable and replaced by the aluminium reflector when bowl reflector lamps are used.

■ The basic unit is supplied in neat, clear plastic blister packs, ready for immediate display as an aid to retail selling.

MATERIALS & FINISH

Body and base: polycarbonate.

Reflector: Brightened anodised aluminium. Satin finished back

Lampholder: ceramic E.S.

WEIGHT

180 gms (without lamp or reflector)

SPECIFICATION

■ Type complies with BS 4533

■ Class II electrical protection (double insulated)

■ V.D.E. approved (West Germany)

RANGE OF OPERATION

Supply voltage: 100 to 240 volt nominal, 2 amps max.
For indoor use.

Lamp: PAR 38 (Holland) R 20, R 30, Bowl Reflector (U.K.)

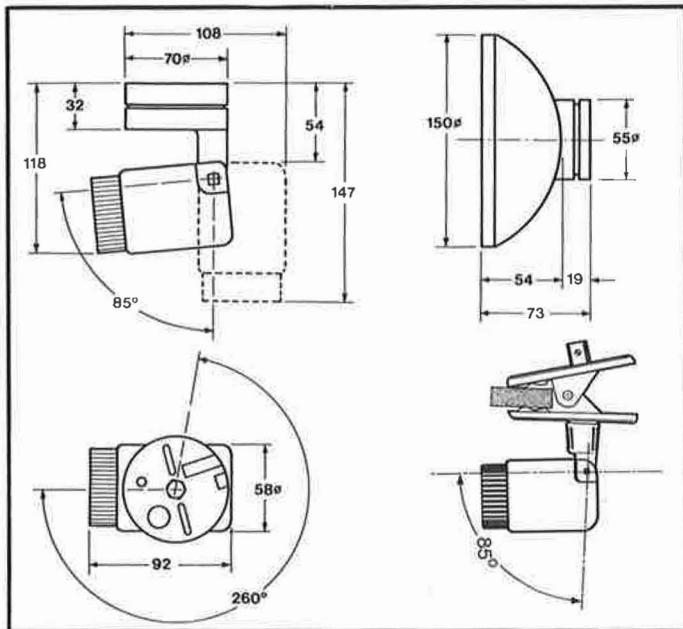
Fitting: Holland



DHN 350 Clamp fitting



Individual Blister pack for retail trade



All dimensions in mm

ORDERING DATA

| Catalogue number | Description | Watts | Suitable for Lamp Type | Box Qty. |
|------------------|--------------------------|-------|------------------------|----------|
| DGN 350/20 | Basic unit white | 150 | PAR 38* R30, R20 | 8 |
| DGN 350/40 | Basic unit black | 150 | PAR 38* R30, R20 | 8 |
| DHN 350/20/W | Clamp unit white | 150 | PAR 38* R30, R20 | 8 |
| DHN 350/40/W | Clamp unit black | 150 | PAR38* R30, R20 | 8 |
| ZZZ 350/00 | 60W reflector alum/clear | 60 | 60W ES Bowl Reflector | 4 |
| W9622 | Screening ring | 150 | PAR 38* | 4 |

*excluding "Cool Spot"

N.B. Lamps should be ordered separately

CI/SIB

(63.2)

UDC

696.6:628.976

W 4001

Recessed downlight fitting

RANGE

Adjustable for PAR 38, Blown Bulb Reflector Lamps, Cool Beam, PowerRay and the MLR plant lighting lamp.

W4001 can be used with infra-red lamps, to maximum 375 watts, and MLR 160W.

APPLICATIONS

Possible applications include:

- Shop windows for display lighting
- Over counters
- Show cases, lighting from above
- Corridors
- Hotel halls
- Foyers
- Heat curtains to shop, hall and office entrances
- Plant lighting
- Process heating

FEATURES

- The W4001 is a simple yet very versatile fitting which can easily be removed for access.
- The fitting has an adjustable lampholder enabling various lamps to be used.
- The smart aluminium finish of the visible ring to the fitting is suitable for all ceiling colours.



Handbook Ref.

1.1.6

To reorder this data sheet quote 9.79 PL 1710/1

Replaces

PL 1710

MATERIALS & FINISH

Fitting body: Clear anodised aluminium

Bracket: Zinc plated

Lampholder: Porcelain

FIXING

Three countersunk holes in flange on 166mm P.C.D. Top bracket pre-drilled for two height adjustment positions and for mounting a heat resistant junction box if required.

SPECIFICATION

■ Type compliance with BS 4533

■ Fully recessed fitting for both downlighting and infra-red process applications, suitable for a variety of reflector lamps.

To specify state:

Fully recessed fitting with bright aluminium bezel, having adjustable lampholder height for all reflector lamps up to 375W max. Philips W4001.

Fitting: Made in UK



ELECTRICAL DATA

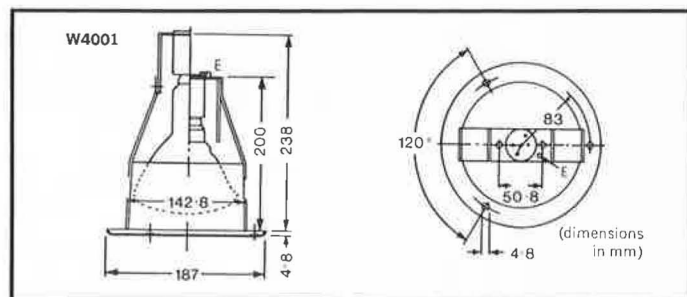
Class I insulation (earth required) for 100/240V supply 3A max. Fitted with 1 metre heat resisting tails. For 24V PAR 38 or R40 lamps replace tails supplied by heat resisting wiring of 6A current rating.

RANGE OF OPERATION

Suitable for indoor use only.

DIMENSIONS & WEIGHT

| Height adjustment (mm) | Diameter | Ceiling Cut-out | Flange | Weight | Cap |
|------------------------|----------|-----------------|--------|---------|-----|
| 238 max., 200 min. | 142.8 mm | 146 mm dia | 187 mm | 650 gms | ES |



ORDERING DATA

| Catalogue No. | Description | Packing Quantity |
|---------------|--------------------------------|------------------|
| W4001 | Fully recessed ceiling fitting | 3 |

LAMP DATA

| Lamp Type | Watts | Volts | Finish | Cap | Packing Qty. | Lamp Weight (gm) |
|----------------------|-------------|---------|-------------------|-----|--------------|------------------|
| R30 | 75/100 | 240/250 | Diffused/Colour | ES | 10 | 70 |
| PAR 38 | 100/150 | 240 | Spot/Flood/Colour | ES | 15 | 325 |
| R40 | 150 | 240/250 | Diffused | ES | 10 | 105 |
| Infra-red, Reflector | 250/300/375 | 230/250 | Red/Clear | ES | 9 | 150 |
| *PowerRay MBFR/U | 125 | — | White | ES | 9 | 128 |
| MLR | 160 | 240 | Diffused | ES | 12 | 109 |
| CoolBeam | 150 | 240 | Spot | ES | 15 | 325 |

* Appropriate control gear must be used with this lamp. See data sheet PL 1779.

Note that lamps should be ordered separately.

DGN 550 Knuckle Spot System

Indoor display fittings for use with a wide range of reflector lamps

A range of spotlight fittings and attachments in a choice of two modern colours, brown and white. The sophisticated design of the rotatable knuckle joint gives the fitting a unique design image and allows an extensive capacity for adjustment in all directions and for many types of lamps.

RANGE

| | <i>Brown</i> | <i>White</i> |
|----------------------|--|--|
| Basic Fitting | DGN 550/42 | DGN 550/20 |
| R20 Shield | GGG 01/42 | GGG 01/20 |
| R30 Shield | GGG 02/42 | GGG 02/20 |
| Parabolic Reflectors | ZZZ 550/02 ZZZ 150/02 ZZZ 150/12 | ZZZ 550/01 ZZZ 150/01 ZZZ 150/11 |

Plus attachments:

W9622 Black screening ring (for use with Par 38 lamps).

These fittings are available for track mounting see Data Sheet PL 1786.

APPLICATIONS

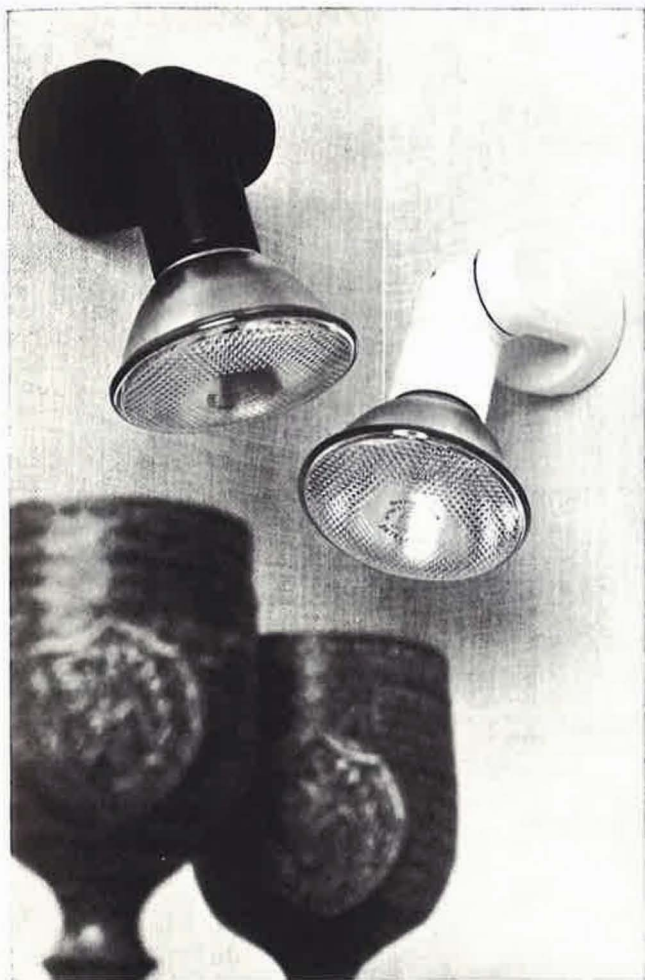
Applications include:

- Shop window display
- Bars, pubs and clubs
- Discotheques
- Boutiques
- Exhibitions
- Museums
- Churches
- Entrance halls and foyers
- Public buildings

RANGE OF OPERATION

Supply voltage 100 to 240 volt nominal, 2 amps max.

For indoor use



Handbook Ref.

1.1.9

To reorder this data sheet quote

5.79 PL 1747/1

Replaces

PL 1747

FEATURES

- Moulded in durable synthetic materials which are damage and heat resistant giving a long, trouble-free life.
- Double insulated, needing no earthing connections. Ideally suited for use with existing wiring where no earth wire is present.
- Patented 'click' system attaches the fitting to its baseplate. No screw to get lost while wiring; easily removed with screwdriver.
- The attachments simply clip onto the fitting and the parabolic reflector is focussed by turning the knurled ring on the reflector.
- Fully adjustable. 350° rotation in the horizontal plane and 180° in the vertical gives an excellent field of display.
- The cable is hidden in the knuckle joint so no wires are exposed to get snagged.
- Supply cable can be inserted from the back or side by means of knockouts.
- Ready wired with a terminal block for ease of installation.
- Keyhole fixing slots match BS box.
- Durable, large diameter rotation joints do not require locking with a screwdriver.
- Basic unit supplied in blister pack for ease of display and identification.
- Black screening ring W9622 clips directly onto PAR 38 lamps for glare control.

MATERIALS & FINISH

- Body:** Polysulphon
Wallplate, click button and anti-glare diaphragm: Polyamide
Bracket: Polycarbonate
Lampholder: Porcelain ES
Reflectors: } Enamelled aluminium
Shields: }

SPECIFICATION

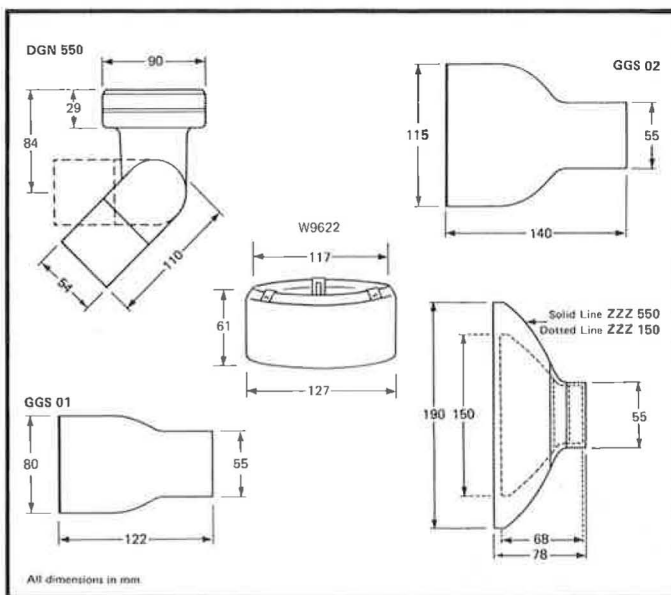
- Type complies with BS 4533.
- Class II electrical protection (double insulated).
- VDE approved (West Germany).

To specify state:

Double insulated spotlight fitting with fully rotatable joints (350° x 180°). Also having push button base fixing and a range of attachments. Philips DGN 550.

DIMENSIONS & WEIGHTS

Weight of basic unit (less lamp): 0.25 kg.
 See diagrams for dimensions.



DGN 550 Blister Pack

ORDERING DATA

| Catalogue No. | Description | Box Qty. | To Order Please Quote | Suitable for Lamp Type |
|---------------|---------------------------|----------|-----------------------|------------------------|
| DGN 550/20 | Basic Unit White | 8† | 022571 | Par 38* |
| DGN 550/42 | " " Brown | 8† | 022584 | |
| ZZZ 550/01 | 100W Reflector White/Alum | 4 | 023282 | |
| ZZZ 550/02 | " " Brown/Alum | 4 | 023266 | 100W Bowl Reflector |
| ZZZ 150/01 | 60W Reflector White/Alum | 4 | 023224 | |
| ZZZ 150/02 | " " Brown/Alum | 4 | 023237 | 60W Bowl Reflector |
| ZZZ 150/11 | " " White/Gold | 4 | 023240 | |
| ZZZ 150/12 | " " Brown/Gold | 4 | 023253 | 60W R20 Max. |
| GGS 01/20 | R20 Shield White | 4 | 023101 | |
| GGS 01/42 | " " Brown | 4 | 023004 | |
| GGS 02/20 | R30 Shield White | 4 | 023114 | 100W R30 Max. |
| GGS 02/42 | " " Brown | 4 | 023127 | |
| W 9622 | Screening Ring | 4 | 022652 | Par 38 150W* |

*excluding 150W Cool Spot. † individually blister packed in 8-way outer.

Made in Holland.

| | |
|--------|---------------|
| CI/SIB | (63.2) |
| UDC | 696.6:628.976 |

RCS 635

Three Circuit Lighting Track System

Four conductor and earth track and accessories, with a versatile range of display fittings.

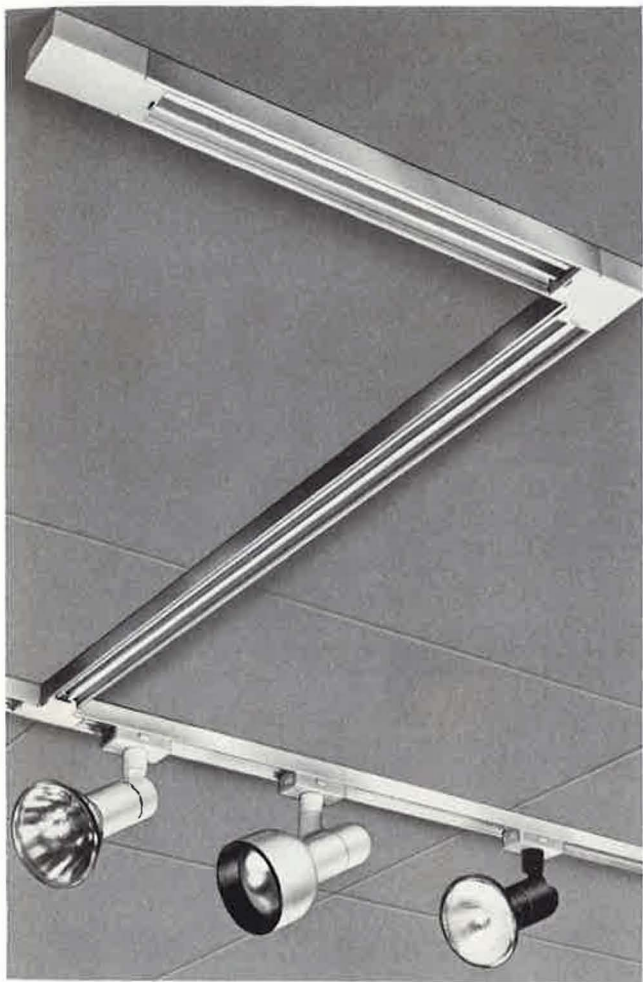
A simply installed surface-mounted system of shallow depth, suitable for use on single or three-phase supplies, at up to 3840W per circuit. The attractive range of fittings is designed and manufactured by Philips to set high standards of durability and versatility at realistic prices. Four independent conductors and earth permit three separately switched circuits.

RANGE

Extruded aluminium track in three module lengths of 1250 mm, 2500 mm and 3750 mm, with straight, L and T couplers, live end connector and dead end. Three basic ranges of spotlight fitting, each with a choice of attachments to give a total of 54 variations: DRN 352 for economy, RGS 03 and the stylish DRN 552.

APPLICATIONS

- Shop window display
- Shop interior display
- Assembly areas and workshops
- Museums and galleries
- Exhibition halls
- Foyers and reception areas
- Conference rooms
- Clubs, public houses and discotheques
- Restaurants



Handbook Ref

1.1.10

To reorder this data sheet quote 9.79 PL 1795/2

Replaces PL 1795/1

FEATURES

- Shallow depth and slim adaptors give increased headroom and neat, unobtrusive appearance.
- Three standard track lengths; easily cut to length without the need for special tools for track preparation. End insulation plugs supplied.
- Simple to install; slotted track screws directly to ceiling.
- Double-U section gives high resistance to bowing, with wide fixing centres.
- Each conductor rated up to 16A; earth continuity ensured by screw clamps to plated rail.
- Simple system with few components to simplify ordering and stock-holding.
- VDE and KEMA approved.
- Three ranges of popular display fittings – matching versions for independent mounting are available.

DIMENSIONS

Track lengths:

| | |
|-------------|---------|
| RCS 635/125 | 1205 mm |
| RCS 635/250 | 2455 mm |
| RCS 635/375 | 3705 mm |

Couplers:

All couplers have an effective length of 45 mm.

Live end connector:

RCS 635/00 effective length 70 mm.

Dead end:

RCS 635/04 effective length 2 mm.

Note: The effective length of these components must be added to the track length in order to obtain the overall length of an installation.

MATERIALS & FINISH

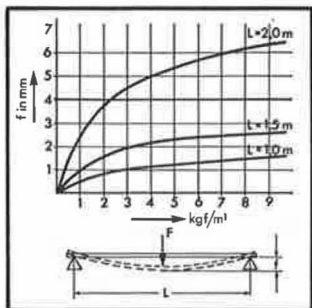
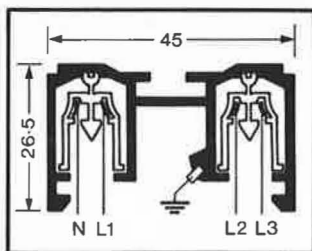
Track: Anodised aluminium extrusion, natural finish, with copper conductors in insulated moulding and plated earth conductor.

Couplers: Plated steel backplates with light grey clip-on covers. Supplied complete with track insulating plugs.

RANGE OF OPERATION

For indoor use only.

Up to 440V between phases, 50Hz.



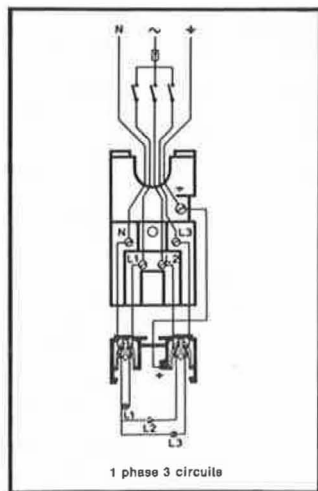
Curve showing deflection against load at various fixing centres. Deflection must not exceed 4mm.

ELECTRICAL DATA

Single phase:

$I(\max) = 16A$ (see diagram)

Maximum load on 240V = 3840W.



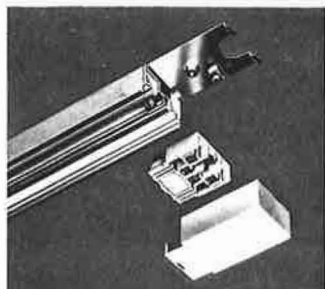
Three-phase (where permitted):

$I(\max) = 3 \times 16A$

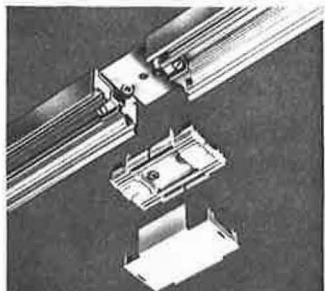
$W(\max) = 3 \times 3840W$

16A max in neutral conductor

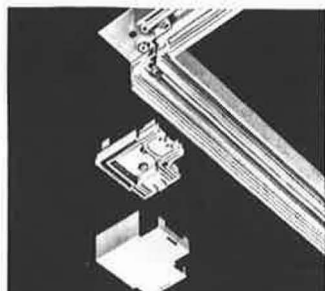
For lighting purposes only



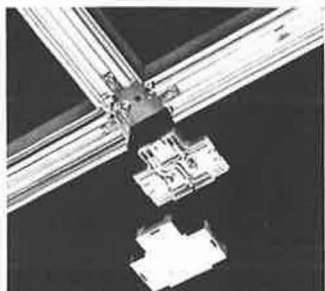
LIVE END CONNECTOR RCS 635/00
Wiring/conduit entry from back and three sides



STRAIGHT COUPLER RCS 635/08
Backplate, electrical bridge, clip-on cover



L-COUPLES RCS 635/06 (earth outside); RCS 635/16 (earth inside)
Backplate, electrical bridge, clip-on cover



T-COUPLES RCS 635/09 (earth outside); RCS 635/19 (earth inside)
Backplate, electrical bridge, clip-on cover



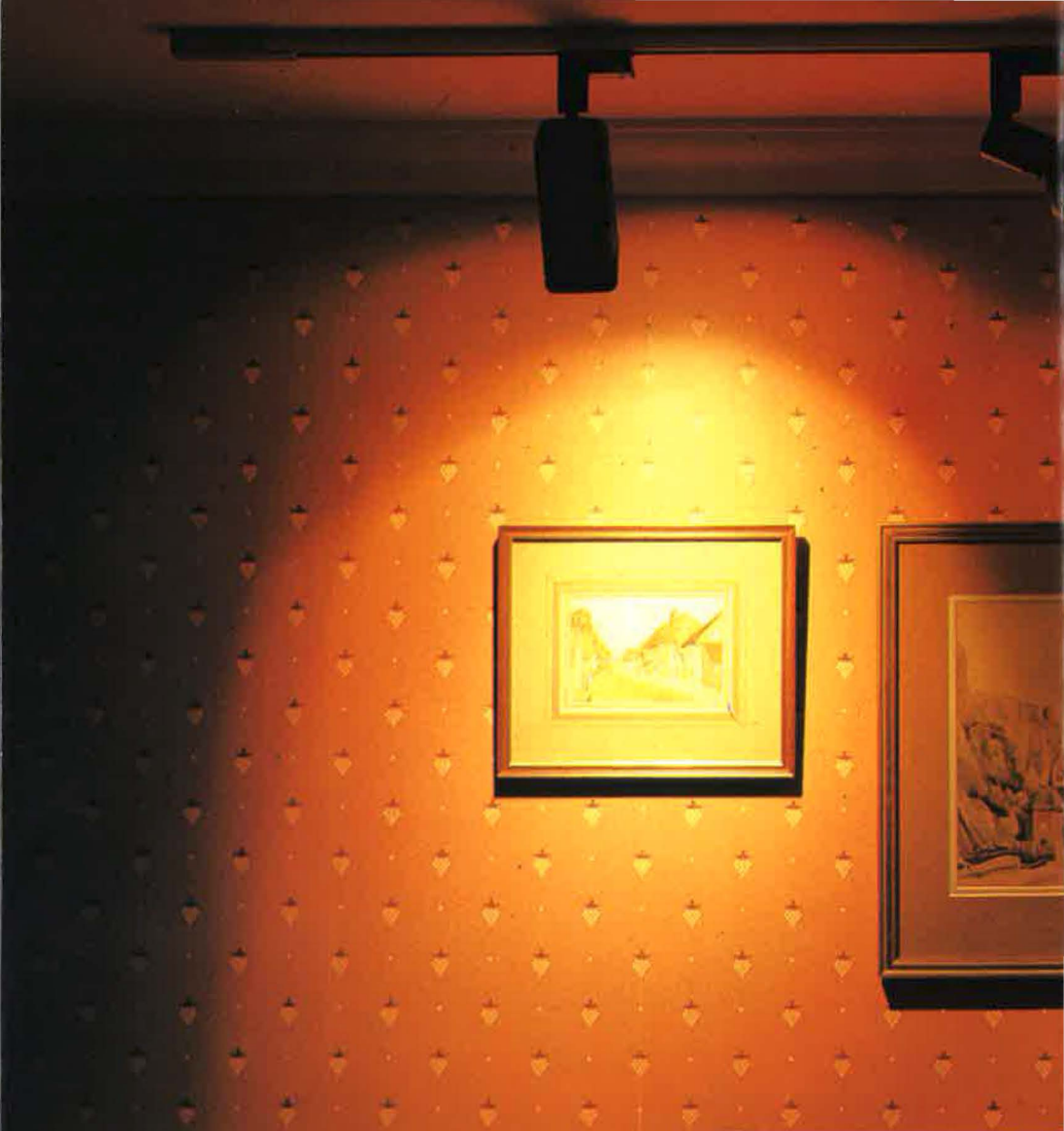
DRN 554/42 with ZZZ 550/02 reflector. (Details on Pages 13 and 41)



DRN 354/20 with PAR 38 lamp. (Details on Pages 9 and 41)



ORGS 06/20 with GGS 01/20 Shield. (Details on Pages 7 and 41)



DGN 120/42
(Details on Page 29)



DRN 124/20
(Details on Page 41)



DRN 494/20
(Details on Page 41)



DGN 490/42
(Details on Page 1)



DRN 495/20
(Details on Page 41)



DGN 491/20
(Details on Page 3)

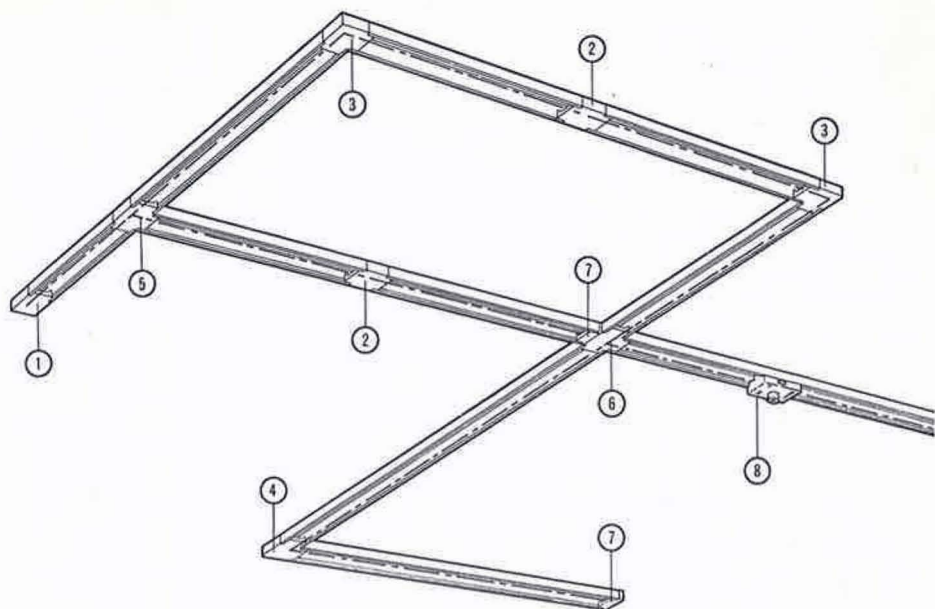
Right. DHN 350 Clothes Peg Attachment. (See Page 9)

Far right. DGN 550/20 with PAR 38 lamp. (Details on Page 13)

Right. AGS fitting with 190mm reflector. (Details on Page 7)

Far right. W9600 Spotlight with PAR 38 lamp. (Details on Page 5)





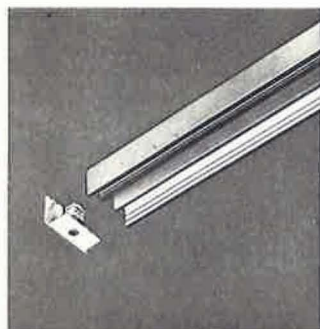
Installation viewed from below

--- represents earth conductor

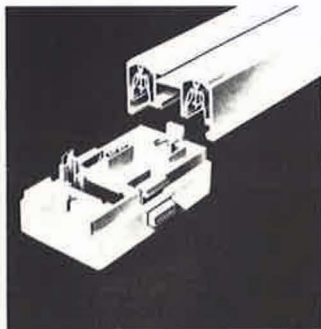
GUIDE TO ORDERING

Since the track system is polarised by an offset earth rail, it is necessary to ensure that the appropriate versions of L-couplers and T-couplers are ordered. The installation should be planned using this diagram as a guide, and starting from the live end connector to ensure track polarity.

| Key | Cat. No. | Description |
|-----|-------------|---------------------------|
| 1 | RCS 635/00 | Live end connector |
| 2 | RCS 635/08 | Straight coupler |
| 3 | RCS 635/06 | L-coupler (earth outside) |
| 4 | RCS 635/16 | L-coupler (earth inside) |
| 5 | RCS 635/09 | T-coupler (earth outside) |
| 6 | RCS 635/19 | T-coupler (earth inside) |
| 7 | RCS 635/04 | Dead end |
| | RCS 635/125 | Lighting track 1205 mm |
| | RCS 635/250 | Lighting track 2455 mm |
| | RCS 635/375 | Lighting track 3705 mm |
| 8 | RCS 635/13 | Loose adaptor |



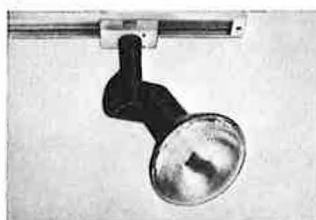
DEAD END RCS 635/04



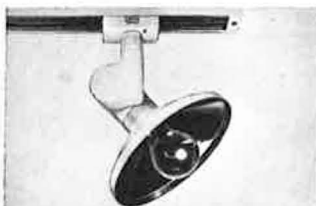
LOOSE ADAPTOR RCS 635/13
Includes cord grip. Adaptors feature a movable contact blade with a red circuit indicator which is visible from below.



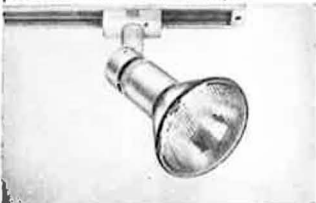
The body simply plugs into the track, and is released by depressing two side catches.
The adaptor is unobtrusive and simple, with no switches or fuse.



DRN 552/42 with PAR 38 lamp.



DRN 552/20 fitting with ZZZ 550/01 parabolic reflector for 100W lamp.



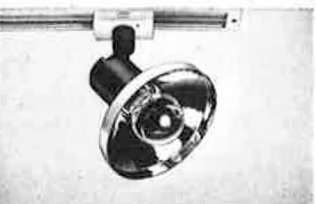
RGS 03/20 fitting with PAR 38 lamp.



RGS 03/20 fitting with GGS 04/301 parabolic reflector for 100W lamp.



DRN 352/40 fitting with PAR 38 lamp.



DRN 352/40 fitting with ZZZ 350 parabolic reflector for 60W lamp.

Display fittings for RCS 635 track

Three ranges of spotlight fittings are detailed in Data Sheet PL 1841. Some examples are illustrated here, and the three ranges together with lamp shields, reflectors and accessories are listed below. These give a total of fifty-four variations around popular reflector lamps ranging from 40W to 150W.

The DGN550, AGS and DGN350 ranges of complementary fittings for independent mounting are detailed in data sheets PL 1747, PL 1711 and PL 1707/1 respectively.

These fittings are all double insulated and constructed from durable, self-coloured synthetic materials with matching metal shields and reflectors, and are designed to comply with BSI and International Standards.

ORDERING DATA (FITTINGS)

| Catalogue No. | Description | Suitable lamp types | Packing quantity |
|-----------------------|---------------------------------------|---------------------|------------------|
| DRN 552 system | | | |
| DRN 552/20 | Knuckle display track fitting (white) | PAR 38*, R20, R30 | 4 |
| DRN 552/42 | Knuckle display track fitting (brown) | | |
| GGS 01/20 | Shield for R20 lamp (white) | | |
| GGS 01/42 | Shield for R20 lamp (brown) | R20 | 4 |
| GGS 02/20 | Shield for R30 lamp (white) | R30 | 4 |
| GGS 02/42 | Shield for R30 lamp (brown) | | |
| ZZZ 550/01 | 100W reflector (white/clear) | 100W bowl reflector | 4 |
| ZZZ 550/02 | 100W reflector (brown/clear) | | |
| ZZZ 150/01 | 60W reflector (white/alum) | 60W bowl reflector | 4 |
| ZZZ 150/02 | 60W reflector (brown/alum) | | |
| ZZZ 150/11 | 60W reflector (white/gold) | | |
| ZZZ 150/12 | 60W reflector (brown/gold) | | |
| RGS 03 system | | | |
| RGS 03/20 | Display track fitting (white) | PAR 38* | 4 |
| RGS 03/42 | Display track fitting (brown) | | |
| GGS 01/20 | Shield for R20 lamp (white) | | |
| GGS 01/42 | Shield for R20 lamp (brown) | R20 | 4 |
| GGS 02/20 | Shield for R30 lamp (white) | R30 | 4 |
| GGS 02/42 | Shield for R30 lamp (brown) | | |
| GGS 04/301 | 100W reflector (white/clear) | 100W bowl reflector | 4 |
| GGS 04/304 | 100W reflector (white/yellow) | | |
| GGS 04/501 | 100W reflector (brown/clear) | | |
| DRN 352 system | | | |
| DRN 352/20 | Basic display track fitting (white) | PAR 38* | 4 |
| DRN 352/40 | Basic display track fitting (black) | | |
| ZZZ 350/00 | 60W reflector (alum/clear) | | |
| All systems | | | |
| W9622 | Black screening ring | PAR 38 150W* | 4 |
| W9623 | Red filter | | |
| W9624 | Blue filter | PAR 38 100W | 4 |
| W9626 | Green filter | | |
| W9627 | Yellow filter | | |

*Excluding PAR 38 Cool Spot.

Lamps should be ordered separately.

Please order spotlight fittings and accessories in packing quantities only.

ORDERING DATA (TRACK)

| Catalogue No. | Description | Diagram code | Packing quantity |
|---------------|---------------------------|--------------|------------------|
| RCS 635/125 | Lighting track 1205 mm | — | 2 |
| RCS 635/250 | Lighting track 2455 mm | — | 2 |
| RCS 635/375 | Lighting track 3705 mm | — | 2 |
| RCS 635/00 | Live end connector | 1 | 1 |
| RCS 635/08 | Straight coupler | 2 | 1 |
| RCS 635/06 | L coupler (earth outside) | 3 | 1 |
| RCS 635/16 | L coupler (earth inside) | 4 | 1 |
| RCS 635/09 | T coupler (earth outside) | 5 | 1 |
| RCS 635/19 | T coupler (earth inside) | 6 | 1 |
| RCS 635/04 | Dead end | 7 | 1 |
| RCS 635/13 | Loose adaptor | 8 | 1 |

Please order track components in packing quantities only.

Made in Holland.

DRN 552 DRN 352 RGS 03

Display fittings for RCS 635, 3 circuit track

The fittings in three ranges are well designed and manufactured by Philips to set high standards of durability and versatility at realistic prices. They are used in conjunction with the RCS 635 shallow-depth track system, which has four independent conductors plus earth to permit three separately switched circuits, and are supplied complete with slim-line adaptors to fit the track.

RANGE

DRN 552 system:

Knuckle display track fittings in white or brown for PAR 38, R20 or R30 lamps, matching shields for R20 or R30 lamps, and matching parabolic reflectors for 60W or 100W bowl reflector lamps.

RGS 03 system:

Display track fittings in white or brown for PAR 38 lamp, matching shields for R20 or R30 lamps and a choice of three reflectors for 100W bowl reflector lamps.

DRN 352 system:

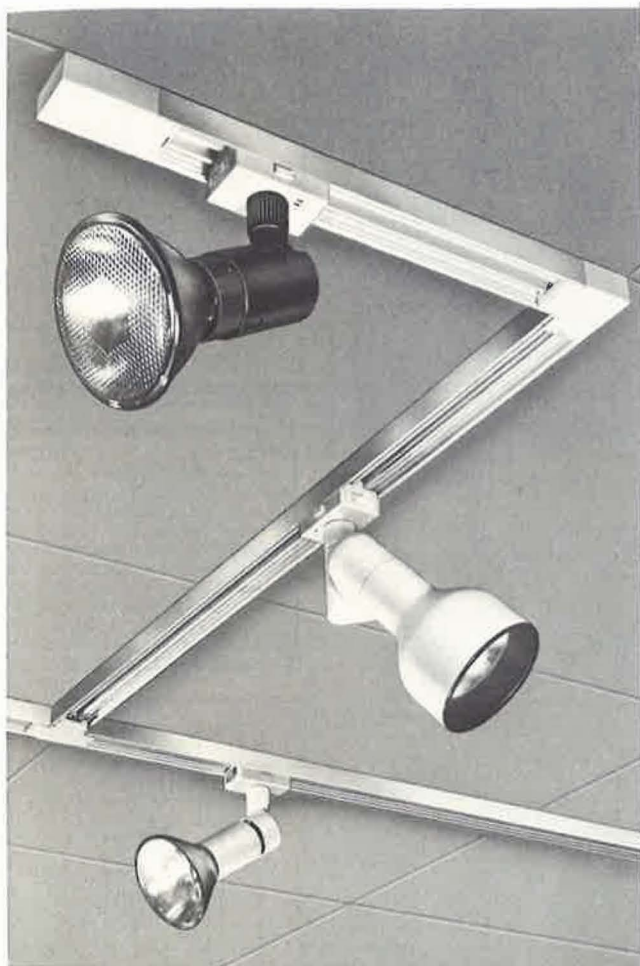
Basic display track fittings in white or black for PAR 38 lamp, and a parabolic reflector for 60W bowl reflector lamps.

All systems:

Also available is a screening ring to PAR 38 lamps.

APPLICATIONS

- Shop window display
- Shop interior display
- Assembly areas and workshops
- Museums and galleries
- Exhibition halls
- Foyers and reception areas
- Conference rooms
- Clubs, public houses and discotheques
- Restaurants



Handbook Ref.

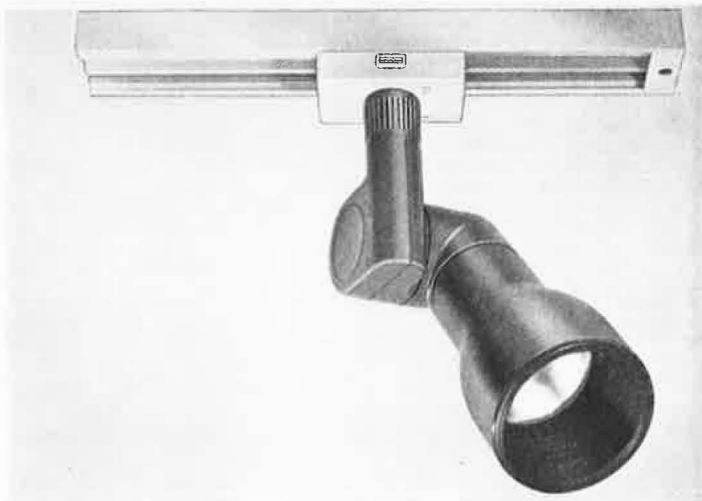
1.1.10/1

To reorder this data sheet quote 9.79 PL 1841/1

Replaces PL 1841

FEATURES

- Display fittings are supplied complete with simple adaptors (unswitched and unfused) for mounting on the track; adaptors are easily set to pick up any one of the three track circuits by means of a moveable contact blade.
- A red window on the adaptor indicates from below which circuit is in use.
- Track fittings match other fittings in Phillips range to give uniformity in lighting schemes: DRN 352 matches DGN 350; DRN 552 matches DGN 550 knuckle spot system and RGS 03 matches AGS system.
- Easy-clean synthetic materials do not scratch or show fingermarks.
- Double-insulated for safety.
- Adaptors simply plug into the track, and are removed by depressing the side buttons.
- Low-profile adaptors, coupled with slim track, increases headroom.



DRN 552/42 fitting with GGS 01/42 shield for R20 lamp.

MATERIALS & FINISH

Body: Polysulphon (DRN 552), polycarbonate (DRN 352), (RGS 03)

Reflectors: Brightened anodised aluminium, satin finish back

Lampholders: Porcelain ES.

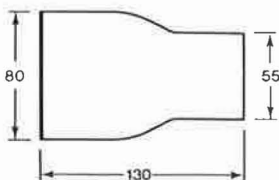
RANGE OF OPERATION

For indoor use only.
100-250V, 2A (max).

DISPLAY FITTING ACCESSORIES

GGG 01

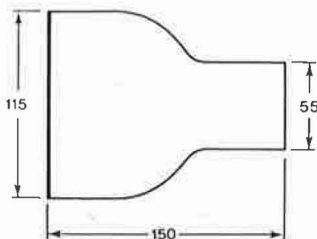
Shield for R20 lamp
suitable for RGS 03
and DRN 552 fitting.



Solid Line ZZZ 550
Dotted Line ZZZ 150

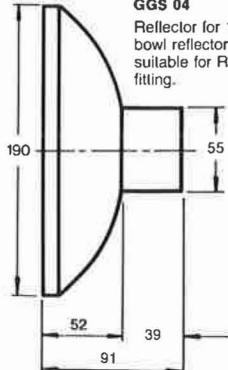
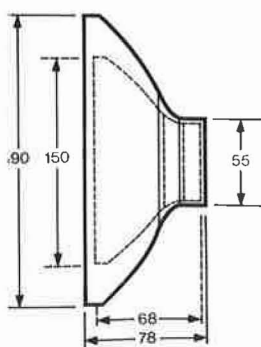
GGG 02

Shield for R30 lamp
suitable for RGS 03
and DRN 552 fitting.

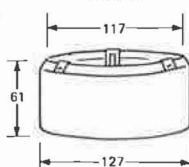


GGG 04

Reflector for 100W
bowl reflector lamp
suitable for RGS 03
fitting.

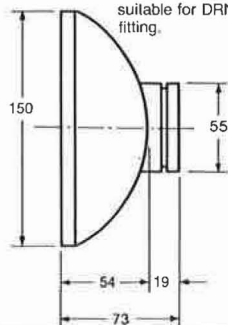


W 9622



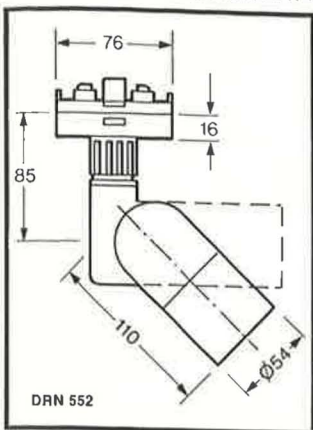
ZZZ 350

Reflector for 60W
bowl reflector lamp
suitable for DRN 352
fitting.



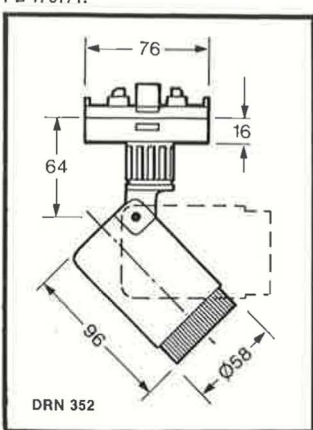
DRN 552 Display lighting system

- Attractive, functional styling embodies features built to a high specification.
- Fully adjustable through 330° horizontally, and 170° vertically through an exceptionally large-diameter friction joint that does not require locking with a screwdriver.
- Strong and durable body moulded from polysulphon and polycarbonate, self-coloured white or brown.
- Fine spot size control by reflector adjustment.
- Available as a matching wall mounted DGN 550. Details on Data Sheet PL 1747.



DRN 352 Display lighting system

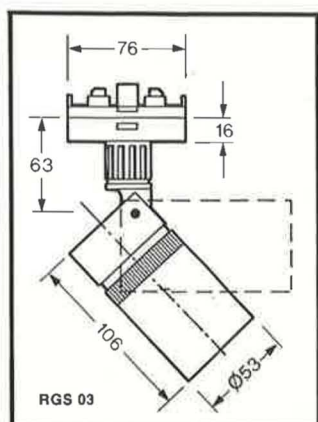
- Clean, simply-styled fitting with compact lines provides effective lighting at low cost. The body is moulded in white or black polycarbonate.
- Wide field of adjustment through 330° horizontally and 85° vertically.
- Detachable ribbed collar is replaced with aluminium reflector when bowl reflector lamps are used.
- Available as a matching wall mounted DGN 350. Details on Data Sheet PL 1707/1.



RGS 03/20 fitting with PAR 38 lamp.

RGS 03 Display lighting system

- A knurled ring on the body enables one-handed fine focussing of the GGS 04 reflector.
- Wide field of adjustment through 325° horizontally and 90° vertically.
- Robust, durable body moulded from white or brown polycarbonate.
- Choice of three reflectors available.
- Available as a matching wall mounted AGS. Details on Data Sheet PL 1711.



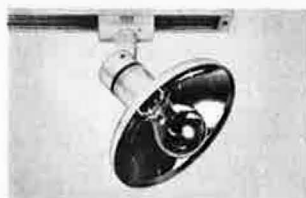
DRN 352/40 fitting with ZZZ 350/00 and 60W bowl reflector lamp.



RGS 03/20 fitting with GGS 01/20 shield for R20 lamp.



RGS 03/20 fitting with GGS 02/20 shield for R30 lamp.



RGS 03/20 fitting with GGS 04/301 parabolic reflector for 100W lamp.



DRN 352/40 fitting with PAR 38 lamp.



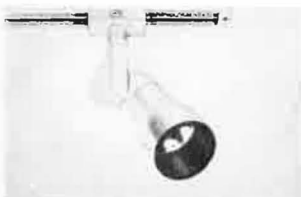
DRN 352/40 fitting with W9622 screening ring on PAR 38 lamp.



DRN 352/40 fitting with ZZZ 350 parabolic reflector for 60W lamp.



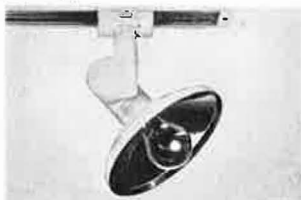
DRN 552/42 with PAR 38 lamp.



DRN 552/20 fitting with GGS 01/20 shield for R 20 lamp.



DRN 552/42 fitting with GGS 02/42 shield for R 30 lamp.



DRN 552/20 fitting with ZZZ 550/01 parabolic reflector for 100W lamp.

ORDERING DATA

| Catalogue No. | Description | Suitable lamp types | Packing quantity |
|----------------|---------------------------------------|---------------------|------------------|
| DRN 552 system | | | |
| DRN 552/20 | Knuckle display track fitting (white) | PAR 38*, R20, R30 | 4 |
| DRN 552/42 | Knuckle display track fitting (brown) | | |
| GGG 01/20 | Shield for R20 lamp (white) | R20 | 4 |
| GGG 01/42 | Shield for R20 lamp (brown) | | |
| GGG 02/20 | Shield for R30 lamp (white) | R30 | 4 |
| GGG 02/42 | Shield for R30 lamp (brown) | | |
| ZZZ 550/01 | 100W reflector (white/clear) | 100W bowl reflector | 4 |
| ZZZ 550/02 | 100W reflector (brown/clear) | | |
| ZZZ 150/01 | 60W reflector (white/alum) | 60W bowl reflector | 4 |
| ZZZ 150/02 | 60W reflector (brown/alum) | | |
| ZZZ 150/11 | 60W reflector (white/gold) | | |
| ZZZ 150/12 | 60W reflector (brown/gold) | | |
| RGS 03 system | | | |
| RGS 03/20 | White display track fitting | PAR 38*, R20, R30 | 4 |
| RGS 03/42 | Brown display track fitting | | |
| GGG 01/20 | Shield for R20 lamp (white) | R20 | 4 |
| GGG 01/42 | Shield for R20 lamp (brown) | | |
| GGG 02/20 | Shield for R30 lamp (white) | R30 | 4 |
| GGG 02/42 | Shield for R30 lamp (brown) | | |
| GGG 04/301 | 100W reflector (white/clear) | 100W bowl reflector | 4 |
| GGG 04/304 | 100W reflector (white/yellow) | | |
| GGG 04/501 | 100W reflector (brown/clear) | | |
| DRN 352 system | | | |
| DRN 352/20 | Basic display track fitting (white) | PAR 38*, R20, R30 | 4 |
| DRN 352/40 | Basic display track fitting (black) | | |
| ZZZ 350/00 | 60W reflector (alum/clear) | 60W bowl reflector | 4 |
| All systems | | | |
| W9622 | Screening ring | PAR 38 150W* | 4 |

*Excluding PAR 38 Cool Spot.

Lamps should be ordered separately.

Made in Holland.

CI/SIB (63.1)

UDC 696.6:628.972

VOGUE

Decorative glass fittings Matching range

A range of five matching fittings with silver or copper cylinder trims, and the option of either clear or amber glasses.

RANGE

All fittings are available with silver or copper finish trims and black base-plates.

Single pendant fitting.

Three-way pendant fitting.

Five-way pendant fitting.

Single wall bracket (switched).

Double wall bracket (unswitched).

Amber glass with 60W clear lamp.

Clear glass with 60W clear lamp.

APPLICATIONS

Each fitting is suitable for use, either on its own or in combination with others from the range, in situations such as:

- Living rooms
- Hallways
- Reception areas and foyers
- Hotel bedrooms
- Boardrooms
- Ballrooms
- Clubs
- Restaurants



Handbook Ref.

1.1.11

To reorder this data sheet quote

1.78 PL1791

Replaces

New

FEATURES

- Moulded crystal glasses of exceptionally high quality to add a dignified appearance to any environment.
- Elegant bodies in a choice of silver or copper finish blend well with modern or traditional decors.
- All fittings are prewired to simplify installation.
- Heat-resistant phenolic lampholders ensure a long and trouble-free life.
- Suspension height of pendant fittings is easily altered by shortening cables.
- Single wall bracket is fitted with pushbutton switch.
- Mounting brackets and ceiling plates are suitable for mounting on 2in BESA box fixing centres; alternatively, the fittings may be fixed with No. 8 woodscrews and suitable wall plugs.
- Each glass is supplied with one 60W clear lamp. (It is recommended that clear lamps be used, since they add sparkle to the fittings).

MATERIALS & FINISH

Glass: High-quality glass mouldings, clear or amber finish.

Body: Aluminium spinning, lacquered, natural or copper finish.

Base (single wall bracket and single pendant): Nylon 66, with self-adhesive aluminium infill trim to match body finish.

Base (double wall bracket): Sheet steel, (passivated), cover plate finished black.

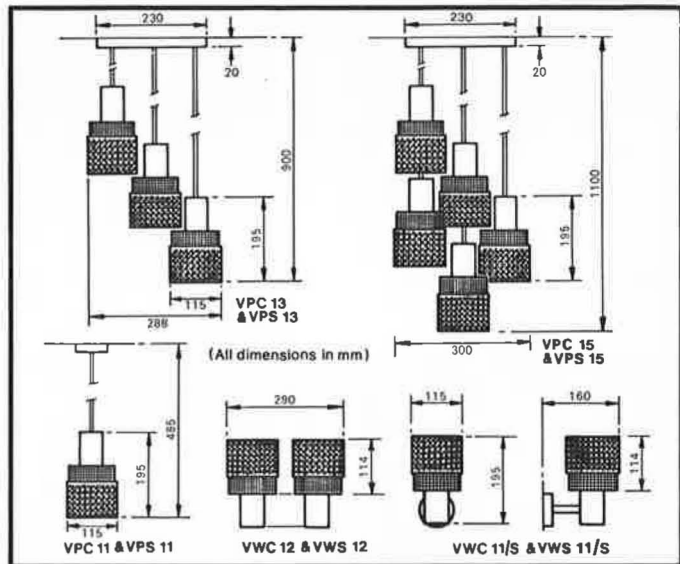
Ceiling plate (3 & 5-way pendants): Steel, black finish.

Lampholder: BC, heat-resistant phenolic.

SPECIFICATION

- Type compliance with BS 4533 2.2.
- Class I electrical protection (earth required).
- Single pendant is double insulated (no earth required).

DIMENSIONS



ORDERING DATA & WEIGHTS

| Catalogue No. | Description | Box qty. | Weight (kg/lb) |
|---------------|------------------------------------|----------|----------------|
| VPC.11 | Single pendant, copper finish | 1 | 0-6/1-3 |
| VPS.11 | Single pendant, silver finish | 1 | 0-6/1-3 |
| VWC.11/S | Single wall bracket, copper finish | 1 | 0-6/1-3 |
| VWS.11/S | Single wall bracket, silver finish | 1 | 0-6/1-3 |
| VWC.12 | Double wall bracket, copper finish | 1 | 1-5/3-2 |
| VWS.12 | Double wall bracket, silver finish | 1 | 1-5/3-2 |
| VPC.13 | Three-way pendant, copper finish | 1 | 2-0/4-4 |
| VPS.13 | Three-way pendant, silver finish | 1 | 2-0/4-4 |
| VPC.15 | Five-way pendant, copper finish | 1 | 3-7/8-2 |
| VPS.15 | Five-way pendant, silver finish | 1 | 3-7/8-2 |
| VGA.10 | Amber glass with 60W clear lamp | 1 | 0-8/1-8 |
| VGC.10 | Clear glass with 60W clear lamp | 1 | 0-8/1-8 |

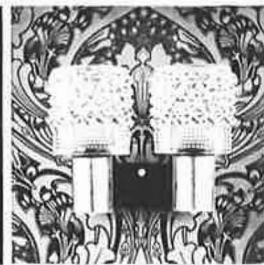
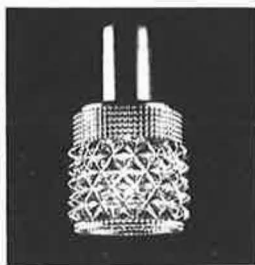
Please order in the form given in the following example. Note that it is essential to order fittings and glasses separately, and that each glass is supplied with one 60W clear lamp.

2 Philips Vogue 5-way pendant fittings VPC.15
10 Philips amber glasses VGA.10

RANGE OF OPERATION

Supply voltages up to 250V.
Maximum rating 60W per lamp.
For indoor use only.

Made in Great Britain.
Glassware made in Austria.



| | |
|--------|---------------|
| CI/SIB | (63.1) |
| UDC | 696.6:628.972 |

VCB41 VCB42

G.L.S. Close Ceiling Fittings

Enclosed circular fittings for close ceiling mounting consisting of a heat resistant black base and snap-on opal diffuser of polycarbonate.

Tough, easy clean construction, ideal for use in damp atmospheres indoors or protected outdoor situations.

RANGE

VCB 41 – Single lamp fitting up to 100 watts

VCB 42 – Twin lamp fitting up to 100 watts per lamp maximum.

APPLICATIONS

Because of the water resistant construction of this fitting it can safely be used in damp atmospheres such as:-

Domestic

- Bathroom
- Toilets
- Porches
- Corridors
- Utility Rooms
- Kitchens

Commercial/Industrial

- Amenity Lighting
- Toilets
- Entrance Halls
- Corridors
- Cloakrooms
- Staircases
- Laundries



| | |
|----------------------------------|---------------|
| Handbook Ref. | 1.1.12 |
| To reorder this Data Sheet quote | 7.77 PL 1706 |
| Replaces | NEW |

FEATURES

- Clean smooth moulded surfaces – no dust collecting ridges
- The base and diffuser are virtually unbreakable and can be used outdoors with safety in protected positions.
- The snap-on diffuser can be removed easily for relamping by means of a coin slot provided in the lip.
- Close ceiling fittings exclude dust and insects, therefore require infrequent cleaning.
- Fittings can be used with safety in damp steamy atmospheres found in laundries, bathrooms etc. Can also be used outside under canopies, covered walkways etc.
- Lampholder ceramic bayonet type.

RANGE OF OPERATION

For indoor and outdoor use in protected positions on 100 to 250V mains supply.

MATERIALS & FINISH

Base: glass reinforced polypropylene, ABS trim

Diffuser: opal polycarbonate

Lampholder(s): ceramic

Reflector: highly reflective pressed aluminium

PHOTOMETRIC DATA & WEIGHTS

BZ5 Light distribution S/H ratio 1.5.
Light output ratio: up 7%, down 43%.
Weight, approx: 567 gms (VCB 41)
794 gms (VCB 42)

SPECIFICATION

- Type Complies with BS4533 2.2.

To specify state:

Opal and Black close ceiling drum fitting, resistant to entry of dust and insects, and with a tough polycarbonate diffuser. As Philips type VCB 41/VCB 42 for 100W / 2 x 100W maximum.

Lamp: Made in U.K.

Fitting: Made in U.K.

ORDERING DATA

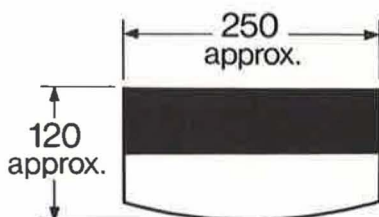
| Catalogue No: | Description | Packing Quantity |
|---------------|------------------------|------------------|
| VCB 41 | 100W Opal drum fitting | 2 |
| VCB 42 | 200W Opal drum fitting | 2 |

Lamps should be ordered separately.

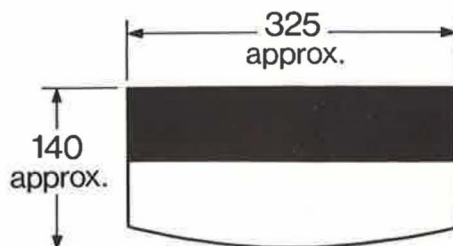
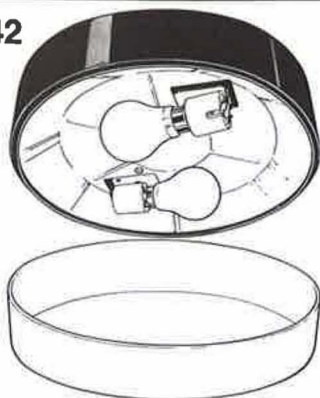
Please order in the form given in the following example, in the multiples of the packing quantity:-

6 Philips Opal drum fittings VCB 41

VCB41



VCB42



All dimensions in mm.

CI/SIB
(63.2)UDC
696.6:628.976

VSC21/S VSS21/S VOGUE

Fully-adjustable spotlight fittings for wall or ceiling mounting, finished in copper or natural aluminium lacquers. A push-button switch is incorporated in the base.

RANGE

Wall or ceiling-mounting spotlight fittings:-

VSC21/S simulated copper finish
VSS21/S natural aluminium finish

APPLICATIONS

For use wherever local effect lighting is required, in situations such as:-

- Exhibition stands
- Museums and art galleries
- Hotels
- Bars in public houses and clubs
- Shops and boutiques
- Domestic situations



Handbook Ref.

1.1.13

To reorder this data sheet quote

9,79 PL 1831/1

Replaces

PL 1831

FEATURES

- Lightweight; inside of lamphousing finished in reflective white enamel.
- Easily fixed on to standard 2in. BS mounting box, or wall or ceiling surface.
- Pushbutton switch for local control of lighting.
- Self-adhesive trim disc for base conceals fixing screws and is finished to match spotlight body.
- Contemporary styling and choice of copper or silver finish to match the Vogue decorative glass series.
- Supplied complete with 60W Superlux lamp, matching base infill trim, insulating disc and sleeves.
- Suitable for use with Philips R20 or Ro80 blown bulb reflector lamps, Superlux and K-mushroom lamps up to 60W.

MATERIALS & FINISH

Body: Aluminium, copper or natural lacquered.

Bracket: Aluminium, black anodised finish.

Base: Nylon 66, black self-coloured.

Lampholder: Brass BC.

Base Infill trim: Aluminium, finished to match body, self-adhesive.

SPECIFICATION

- Type compliance with BS 4533.
- Class I electrical protection (earth required).

ORDERING DATA

| Catalogue No. | Description | Cap | Packing quantity |
|---------------|--|-----|---------------------|
| VSC21/S | Vogue spotlight fitting, copper finish, with 60W Superlux lamp | BC | Individually packed |
| VSS21/S | Vogue spotlight fitting, silver finish, with 60W Superlux lamp | BC | Individually packed |

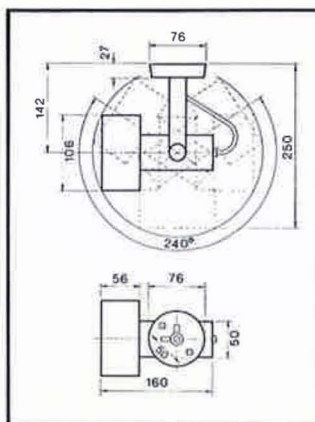
LAMP DATA

| Type | Cap | Watts | Volts | Packing Quantity |
|------------|-----|--------|---------|------------------|
| R20 | BC | 60 | 240/250 | 25 |
| Ro80 | BC | 60 | 240/250 | 25 |
| Superlux | BC | 60 | 240/250 | 25 |
| K-Mushroom | BC | 40, 60 | 240/250 | 25 |

RANGE OF OPERATION

Supply voltages up to 250V.
Maximum lamp rating 60W.
For indoor use only.

DIMENSIONS & WEIGHT



All dimensions in mm

Weight complete with lamp: 200g.



VSC21/S



VSS21/S

Made in Great Britain.

| | |
|--------|---------------|
| CI/SIB | (63.2) |
| UDC | 696.6:628.976 |

DGN 120 MINISPOT

**40W square
adjustable mini spotlight**

A small, attractive spotlight fitting which takes the new 40 Watt R16 lamp, giving a well-controlled spotlight beam.

APPLICATIONS

Suitable applications include:-

Domestic

- Bedhead lighting or dressing table lighting
- Pictures
- Work surface lighting
- Localised lighting for reading or sewing

Commercial

- Hotel bedrooms - bedhead console, dressing table, display areas
- Atmosphere lighting for restaurants
- Jewellers' display cabinets
- Local effects in museums and art galleries



Handbook Ref.

1.1.14

To reorder this Data Sheet quote

9.79 PL 1855/1

Replaces

PL 1855

FEATURES

- Exceptionally attractive styling, ideally suited to contemporary decor.
- Choice of three colours – white for general modern schemes, brown for subdued contemporary tones, metallic bronze for dramatic effects.
- Compact and economical, using the new Philips miniature 40W reflector lamp R16.
- Suitable for wall and ceiling mounting; easily angled having 180° lateral and 90° vertical adjustment.
- The R16 reflector lamp provides an excellent spot beam, ideal for domestic and display applications.
- A double-insulated fitting, requiring only two-core cable (no earthing necessary). Fewer connections means easier and cheaper installation.
- The small size of the R16 lamp enables the fitting to be neat, compact and unobtrusive.
- Black heat-resistant polyamide diaphragm reduces reflected glare.
- Fits standard BESA box.
- Packed for retail trade in blister KombiPak for easy display.
- The blister KombiPak includes an R16 40W reflector lamp, fixing screws and wall plugs.

MATERIALS & FINISH

Lamp housing, shield and base:

Polycarbonate.

Diaphragm: Black polyamide.

Lampholder: Ceramic.

SPECIFICATION

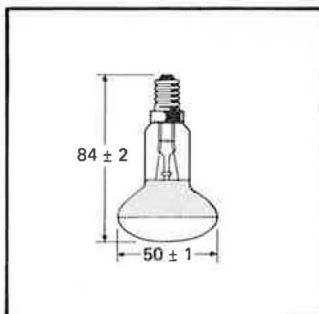
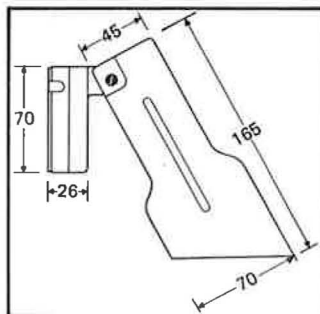
- Type complies with BS 4533 and C.E.E. 25.
- Class II electrical protection (double insulated).
- VDE Test House approval mark (West Germany).

RANGE OF OPERATION

For indoor use on 240V nominal supply.

To specify state:

Miniature double-insulated spotlight fitting of square design, to incorporate a Philips 40W reflector lamp R16. Philips DGN 120 Kombi.



All dimensions in mm

ORDERING DATA

| Catalogue No. | Description | Box qty. | Watts | Suitable for lamp types |
|--------------------------|---|----------|-------|-------------------------|
| DGN 120/20 | Minispot KombiPak (white, complete with lamp and fixings) | 8 | 40W | R16 |
| DGN 120/42 | Minispot KombiPak (brown, complete with lamp and fixings) | 8 | 40W | R16 |
| DGN 120/43 | Minispot KombiPak (metallic bronze, complete with lamp and fixings) | 8 | 40W | R16 |
| Replacement lamps | | | | |
| R16 | 240V 40W SES cap reflector lamp | 25 | — | — |

Made in Holland.

| | |
|--------|---------------|
| CI/SIB | (63.2) |
| UDC | 696.6:628.976 |

SWIVEL SCOOP Downlight Fittings

A fully-recessed downlight fitting of the eyeball type in white or brown that can be rotated to achieve the required lighting effect.

For use with R30 blown bulb reflector lamps and PAR 38 pressed glass reflector lamps.

RANGE

Swivel fully-recessed for R30 and PAR 38* lamps -

Swivel FR/20 (white)

Swivel FR/42 (brown).

*Excluding 150W Cool Spot lamp.

APPLICATIONS

Used for effect lighting in many situations, in particular:-

- Hotel reception areas, entrance halls and foyers
- Shops and boutiques
- Ballrooms and discotheques
- Exhibitions and museums
- Bars in public houses and clubs
- Boardrooms and executive offices
- Domestic effect lighting



INCANDESCENT FITTING

Handbook Ref

1.1.15

To reorder this Data Sheet quote 9.79 PL 1860/1

Replaces

PL 1860

FEATURES

- Easily adjusted in vertical and horizontal planes by finger pressure.
 - Easily installed and connected.
 - Heat-resistant black aluminium diaphragm is shaped to accommodate R30 blown bulb or PAR 38 pressed glass lamps.
 - Distinctive cove design to ceiling bezel/plate.
 - Mark-resistant, tough polycarbonate/polyamide materials ensure easy cleaning and a long, trouble-free life.
 - Popular white or brown colour is set off by smooth black diaphragm to reduce reflected glare.
 - Fittings are supplied individually wrapped for protection.
- Scoop fittings are also available in square versions, and in round versions with optional wallwasher attachments.
- Details of Square Scoop fittings are given in Data Sheet PL 1861.
Details of Round Scoop fittings are given in Data Sheet PL 1862.

MATERIALS & FINISH

- Ceiling base:** Polycarbonate, self-coloured white or brown.
- Lamphousing:** Aluminium, white or brown.
- Diaphragm:** Black aluminium, removable. Smooth finish.
- Lampholder:** Porcelain ES.
- Connector box:** Polyamide.
- Weight:** 600g.

SPECIFICATION

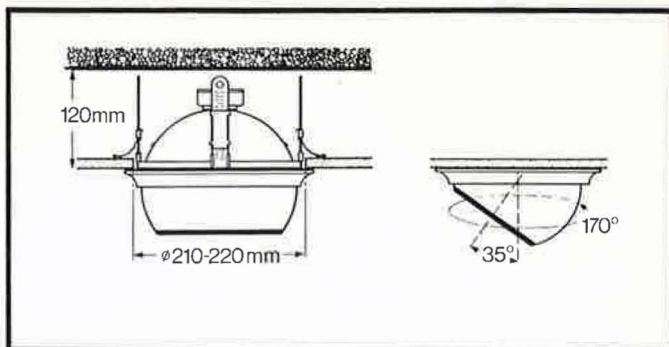
- Type compliance with BS 4533.
- Class II electrical protection (double insulated—no earth required).

RANGE OF OPERATION

For indoor use on 240V nominal supply.

Lamp: R30 made in UK; PAR 38 made in Holland.

Fitting: Made in Holland.



ORDERING DATA

| Catalogue No. | Description | Box Qty. | Suitable for lamp type | Maximum Wattage |
|---------------|------------------------|----------|------------------------|-----------------|
| Swivel FR/20 | Swivel fitting (white) | 4 | R30, PAR 38* | 150 |
| Swivel FR/42 | Swivel fitting (brown) | 4 | R30, PAR 38* | 150 |

*Excluding 150W Cool Spot lamp.

Please order fittings in multiples of the packing quantity.

Note that lamps must be ordered separately.



Fully-recessed Round Scoop.



Semi-recessed Round Scoop.



Surface mounted Round Scoop.

Round Scoops are available in white or brown and in three diameters as shown. (Further details are given on Page 35)

"Wallwasher" attachment (for use with either the Semi- or Fully-Recessed Round Scoop Downlight scheme).





*Semi-recessed Square Scoop.
Fully-recessed Square Scoop.*

Square Scoops are available in white or brown and in three diameters. (Further details on Page 33)



Surface mounted Square Scoop.



*Swivel Scoop Downlight.
Fully recessed downlight available
in White or Brown. (Details on
Page 31).*

CI/SIB
(63.2)UDC
696.6:628.976

SQUARE SCOOP Downlight Fittings

A complementary range of recessed, semi-recessed and surface-mounted downlights for use with reflector lamps and pressed glass lamps.

RANGE

Fully-recessed, semi-recessed and surface-mounted downlights, available in white or brown, and in three sizes to take the following lamps:-

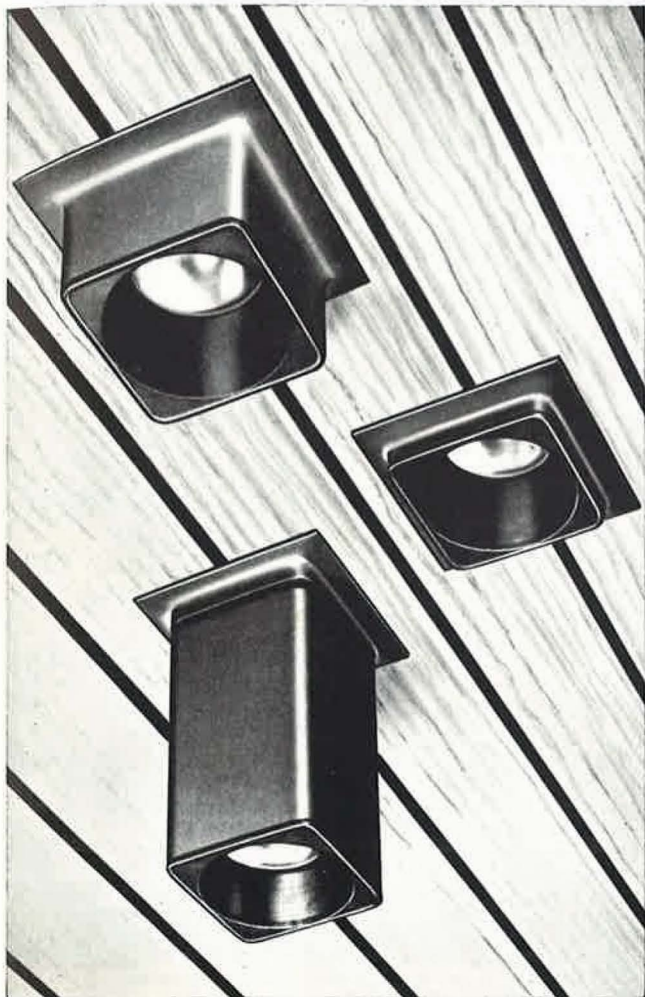
| | R20 | R30 | PAR38* |
|-----------------|-------|-------|--------|
| Fully-recessed | SFR20 | SFR30 | SFR38 |
| Semi-recessed | SSR20 | SSR30 | SSR38 |
| Surface-mounted | SSM20 | SSM30 | SSM38 |

*Excluding PAR 38 150W Cool Spot lamps.

APPLICATIONS

Used for effect lighting in many situations, in particular:-

- Hotel reception areas, entrance halls and foyers
- Shops and boutiques
- Ballrooms and discotheques
- Exhibitions and museums
- Bars in public houses and clubs
- Boardrooms and executive offices
- Domestic work surface lighting
- Localised lighting for reading and sewing



Handbook Ref.

1.1.16

To reorder this Data Sheet quote

9.79 PL1861/1

Replaces

PL1861

FEATURES

Recessed and semi-recessed versions:

- Fittings are simply pushed through ceiling apertures and are secured by strong concealed leaf springs which adjust to ceiling thicknesses up to 50mm; no fixing screws are visible.
- Quickly connected to pre-wired terminal block with cable clamps and heat-resistant wiring in covered box.
- Light weight.

Surface-mounted versions:

- Easy installation – once the ceiling plate is secured, the other components are fixed by a patented 'click' system.
- Colour-matched to recessed range, with contrasting black slotted diaphragm.
- No visible fixing screws.
- Quick electrical connection by means of heat-resistant pre-wired terminal block.

General features:

- Matching styling throughout the range.
- Distinctive cove design to ceiling/bezel plate.
- Mark-resistant, tough poly-carbonate/polyamide materials ensure easy cleaning and a long, trouble-free life.
- Popular white or brown body colour is set off by black detachable grooved diaphragm which minimises reflected glare.
- Fittings are supplied individually wrapped for protection.

Scoop fittings are also available in round versions with optional wall-washer attachments, and in Swivel versions.

Details of round Scoop fittings are given in Data Sheet PL 1862.

Details of Swivel Scoop fittings are given in Data Sheet PL 1860.

MATERIALS & FINISH

Main body: Self-coloured poly-carbonate, white or brown.

Diaphragm: Black ultramide, removable.

Connector box: Noryl.

Lampholder: Porcelain ES.

SPECIFICATION

- Type compliance with BS 4533.
- Recessed and semi-recessed version: Class I electrical protection (earth required).
- Surface-mounted versions: Class II electrical protection (no earth required).

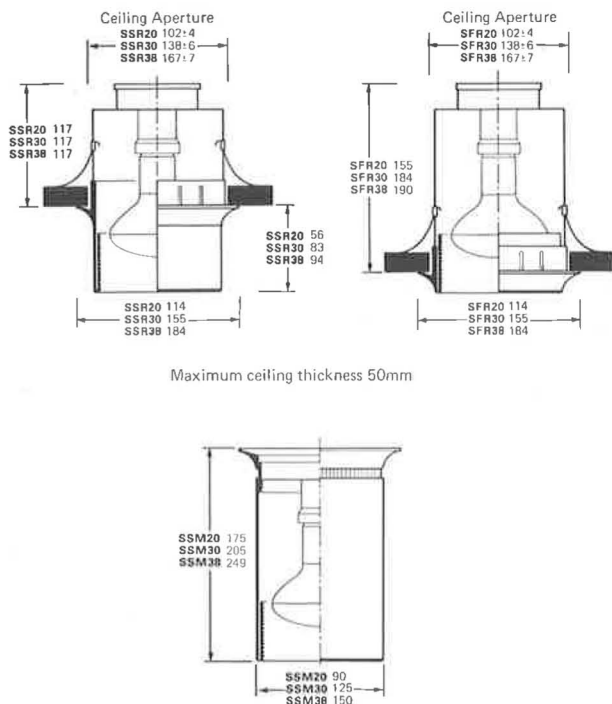
RANGE OF OPERATION

For indoor use on 240V nominal supply.

Lamp: PAR 38 made in Holland; R20 & R30 made in UK.

Fitting: Made in Holland.

DIMENSIONS



Maximum ceiling thickness 50mm

Dimensions in mm

ORDERING DATA

| Catalogue No. | Description | Box Qty. | Suitable for lamp type | Maximum Wattage |
|---------------|-----------------------------------|----------|------------------------|-----------------|
| SFR20/20 | White square fully-recessed unit | 4 | R20 | 60W |
| SFR30/20 | White square fully-recessed unit | 4 | R30 | 100W |
| SFR38/20 | White square fully-recessed unit | 4 | PAR 38* | 150W |
| SFR20/42 | Brown square fully-recessed unit | 4 | R20 | 60W |
| SFR30/42 | Brown square fully-recessed unit | 4 | R30 | 100W |
| SFR38/42 | Brown square fully-recessed unit | 4 | PAR 38* | 150W |
| SSR20/20 | White square semi-recessed unit | 4 | R20 | 60W |
| SSR30/20 | White square semi-recessed unit | 4 | R30 | 100W |
| SSR38/20 | White square semi-recessed unit | 4 | PAR 38* | 150W |
| SSR20/42 | Brown square semi-recessed unit | 4 | R20 | 60W |
| SSR30/42 | Brown square semi-recessed unit | 4 | R30 | 100W |
| SSR38/42 | Brown square semi-recessed unit | 4 | PAR 38* | 150W |
| SSM20/20 | White square surface-mounted unit | 4 | R20 | 60W |
| SSM30/20 | White square surface-mounted unit | 4 | R30 | 100W |
| SSM38/20 | White square surface-mounted unit | 4 | PAR 38* | 150W |
| SSM20/42 | Brown square surface-mounted unit | 4 | R20 | 60W |
| SSM30/42 | Brown square surface-mounted unit | 4 | R30 | 100W |
| SSM38/42 | Brown square surface-mounted unit | 4 | PAR 38* | 150W |

*Excluding 150W Cool Spot lamp.

Please order fittings and accessories in multiples of the packing quantity. Note that lamps must be ordered separately.

| | |
|--------|---------------|
| CI/SIB | (63.2) |
| UDC | 696.6:628.976 |

ROUND SCOOP Downlight Fittings

A complementary range of recessed, semi-recessed and surface-mounted downlights for use with reflector lamps and pressed glass lamps. Clip-on wallwashers are available for the recessed and semi-recessed versions.

RANGE

Fully-recessed, semi-recessed and surface-mounting downlights, available in white or brown, and in three diameters to take the following lamps:-

| | R20 | R30 | PAR38* |
|-----------------|-------|-------|--------|
| Fully-recessed | RFR20 | RFR30 | RFR38 |
| Semi-recessed | RSR20 | RSR30 | RSR38 |
| Surface-mounted | RSM20 | RSM30 | RSM38 |

*Excluding PAR 38 150W Cool Spot lamps.

Optional wallwashers WW20 WW30 WW38 (fully- and semi-recessed versions).

APPLICATIONS

Used for effect lighting in many situations, in particular:-

- Hotel reception areas, entrance halls and foyers
- Shops and boutiques
- Ballrooms and discotheques
- Exhibitions and museums
- Bars in public houses and clubs
- Boardrooms and executive offices
- Domestic work surface lighting
- Localised lighting for reading, sewing, etc.



Handbook Ref

1.1.17

To reorder this Data Sheet quote 9.79 PL1862/1

Replaces

PL1862

FEATURES

Recessed and semi-recessed versions:

- Simple fixing by strong concealed leaf springs which will adjust to ceiling thicknesses up to 50mm; no visible fixing screws.
- Quickly connected to pre-wired terminal block with cable clamp and heat-resistant wiring in covered box.
- Wallwasher attachments simply clip into position, and can be rotated through full 360°.
- Light weight.

Surface-mounted versions:

- Quick electrical connections by means of heat-resistant pre-wired terminal block.
- Colour-matched to recessed range, with contrasting black slotted gallery.
- No visible fixing screws.

General features:

- Matching styling through the range, which includes the useful miniature R20 size.
- Distinctive cove design to ceiling bezel/plate.
- Interesting wallwasher attachment gives excellent glare cut-off and is ideal for shelf or counter display, or general wallwashing.
- Mark-resistant tough polycarbonate/polyamide materials ensure easy cleaning and a long, trouble free life.
- Popular white or brown colour is set off by black detachable grooved diaphragm which minimises reflected glare.
- Fittings are supplied individually wrapped for protection.
- Scoop fittings are also available in Square and Swivel versions.
- Details of Square Scoop fittings are given in Data Sheet PL 1861.
- Details of Swivel Scoop fittings are given in Data Sheet PL 1860.

MATERIALS & FINISH

Surface-mounted fitting: Aluminium body, white or brown lacquered finish, polycarbonate base.

Recessed fittings: White or brown polycarbonate body.

Diaphragm: Black polyamide, removable.

Wallwasher attachment: White or brown polycarbonate.

Connector box: Noryl.

Lampholder: Porcelain ES.

SPECIFICATION

- Type compliance with BS 4533.
- Class I electrical protection (earth required).

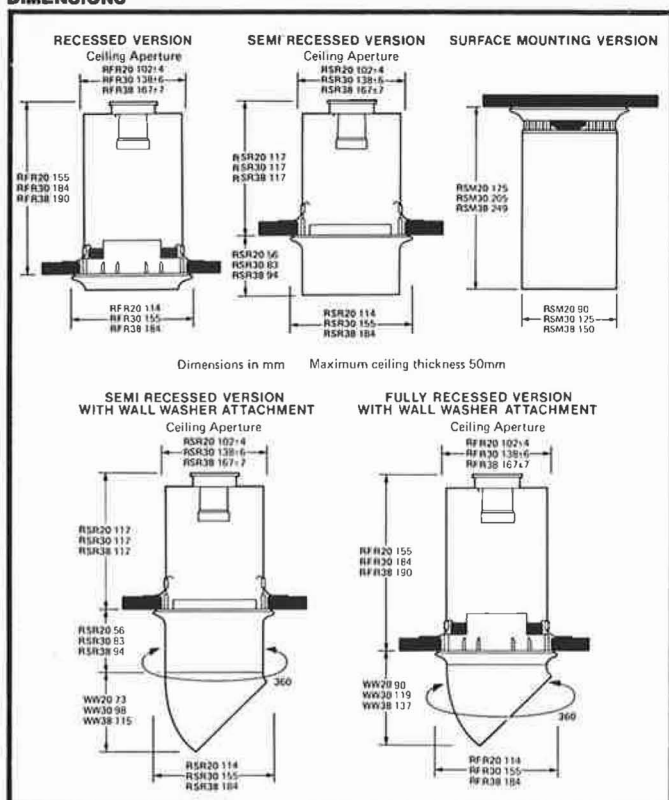
RANGE OF OPERATION

For indoor use on 240V nominal supply.

Lamp: PAR 38 made in Holland;
R20 & R30 made in UK.

Fitting: Made in Holland.

DIMENSIONS



ORDERING DATA

| Catalogue No. | Description | Box Qty. | Suitable for lamp type | Maximum Wattage |
|---|-----------------------------|----------|------------------------|-----------------|
| RFR20/20 | White fully-recessed unit | 4 | R20 | 60W |
| RFR30/20 | White fully-recessed unit | 4 | R30 | 100W |
| RFR38/20 | White fully-recessed unit | 4 | PAR 38* | 150W |
| RFR20/42 | Brown fully-recessed unit | 4 | R20 | 60W |
| RFR30/42 | Brown fully-recessed unit | 4 | R30 | 100W |
| RFR38/42 | Brown fully-recessed unit | 4 | PAR 38* | 150W |
| RSR20/20 | White semi-recessed unit | 4 | R20 | 60W |
| RSR30/20 | White semi-recessed unit | 4 | R30 | 100W |
| RSR38/20 | White semi-recessed unit | 4 | PAR 38* | 150W |
| RSR20/42 | Brown semi-recessed unit | 4 | R20 | 60W |
| RSR30/42 | Brown semi-recessed unit | 4 | R30 | 100W |
| RSR38/42 | Brown semi-recessed unit | 4 | PAR 38* | 150W |
| RSM20/20 | White surface-mounting unit | 4 | R20 | 60W |
| RSM30/20 | White surface-mounting unit | 4 | R30 | 100W |
| RSM38/20 | White surface-mounting unit | 4 | PAR 38* | 150W |
| RSM20/42 | Brown surface-mounting unit | 4 | R20 | 60W |
| RSM30/42 | Brown surface-mounting unit | 4 | R30 | 100W |
| RSM38/42 | Brown surface-mounting unit | 4 | PAR 38* | 150W |
| Optional wallwasher attachments (RFR and RSR units only) | | | | |
| WW20/20 | White wallwasher | 4 | R20 | 60W |
| WW30/20 | White wallwasher | 4 | R30 | 100W |
| WW38/20 | White wallwasher | 4 | PAR 38* | 150W |
| WW20/42 | Brown wallwasher | 4 | R20 | 60W |
| WW30/42 | Brown wallwasher | 4 | R30 | 100W |
| WW38/42 | Brown wallwasher | 4 | PAR 38* | 150W |

*Excluding 150W Cool Spot lamp.
Please order fittings and accessories in multiples of the packing quantity.
Note that lamps must be ordered separately.

| | |
|--------|---------------|
| CI/SIB | (63.2) |
| UDC | 696.6:628.976 |

RCS 655 Two Circuit Lighting Track System

Three-conductor and earth track and accessories, with a versatile range of spotlight fittings.

A simply-installed surface-mounted system of small dimensions and shallow depth for use on single-phase supplies at up to 16 Amps. The attractive range of fittings is designed and manufactured by Philips to set high standards of durability and versatility at realistic prices. Three independent conductors and separate earth permit two separately-switched lighting circuits.

RANGE

Extruded aluminium track in three lengths of 1m, 2m and 3m, with straight, L, T and X couplers, live end connector, ceiling plate and dead end. Six basic ranges of display fittings each with a choice of attachments to give a total of 61 variations: DRN 354 for economy; RGS 06; the stylish DRN 554; DRN 494; DRN 495; and DRN 124 Minispots.

APPLICATIONS

- Shop window display
- Shop interior display
- Assembly areas and workshops
- Museums and art galleries
- Exhibition halls
- Foyers and reception areas
- Conference rooms
- Clubs, public houses and discotheques
- Restaurants
- Domestic effect lighting



Handbook Ref.

1.118

To reorder this data sheet quote 11.79, PL 1658/1

Replaces

PL 1658

INCANDESCENT FITTING

FEATURES

- Shallow depth and slim adaptors give increased headroom and neat, decorative appearance.
- Three standard track lengths; easily cut to size without the need for special tools for track preparation.
- Twin circuit permits independent switching of selected lamps.
- Except for straight coupler, track accessories are not polarised, greatly simplifying layout planning and installation.
- Simple to install; slotted track screws directly to ceiling, and conductor strip clips easily yet firmly into position.
- U-section gives resistance to bowing, with wide fixing centres.
- Each conductor rated at up to 16A, permitting loads up to 4000W at 250V.
- Simple system with few components makes ordering and stockholding easy.
- Six ranges of popular spotlight fittings and accessories; matching versions for wall/ceiling mounting are available.

DIMENSIONS

Track lengths:

RCS 655/100 – 1.0m

RCS 655/200 – 2.0m

RCS 655/300 – 3.0m

Couplers:

RCS 655/08 Straight Coupler has an effective length of 2 mm. All other couplers have an effective length of 33 mm.

Live end connector:

RCS 655/01 has an effective length of 86 mm.

Central connector:

RCS 655/00 Ceiling Plate (centre) plus RCS 655/01 Live End Connector has an effective length of 130 mm.

Dead End:

RCS 655/04 has an effective length of 3 mm.

Note: The effective length of these components must be added to the track length in order to obtain the overall length of an installation.

MATERIALS & FINISH

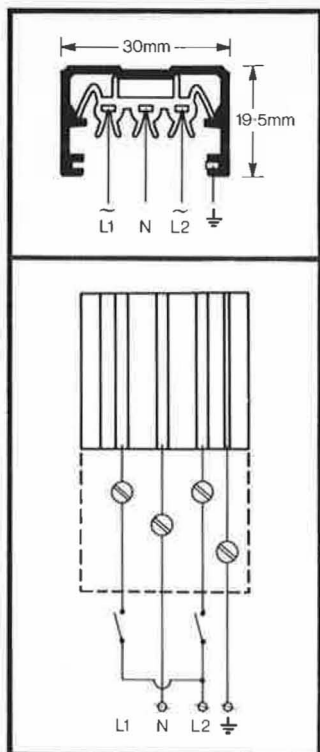
Track: Anodised aluminium extrusion, natural finish, with copper conductors in separate clip-in insulated mouldings; plated earth conductor bonded to the aluminium channel.

Couplers: Self-coloured light grey.

Adaptors: Self-coloured black.

RANGE OF OPERATION

- For dry indoor use only. Ceiling or wall mounting.



ELECTRICAL DATA

Single-phase two-circuit.

$I(\text{max}) = 16\text{A}$ (see diagram)

Maximum load on 250V = 4000W

16A max, in neutral conductor.

Must be earthed.

Guide to fixing

Maximum permitted load 10kg (22 lb) per metre run.

Recommended attachment points per track length (4mm screws):–

1m – 2 screws

2m – 3 screws

3m – 4 screws

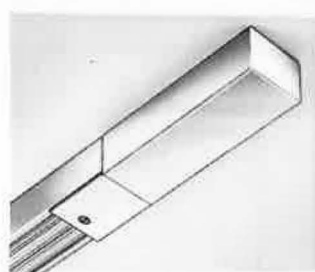
SPECIFICATION

■ Designed to comply with BS.4533 (IEC 570).

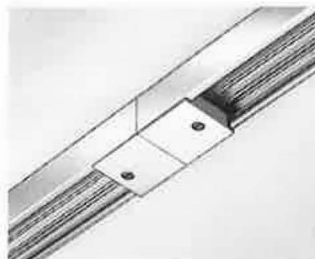
■ VDE and KEMA approved.



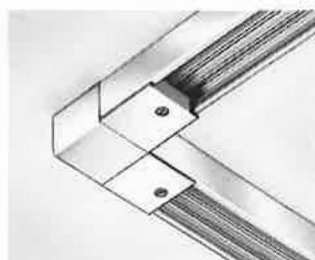
Conductor strip simply clips into channel.



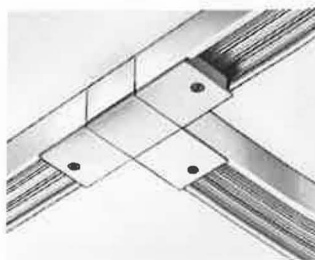
Live End Connector RCS 655/01



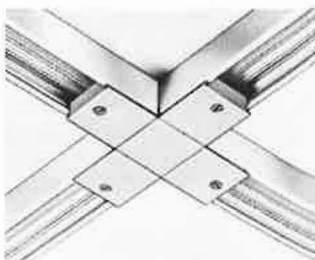
Straight Coupler RCS 655/08



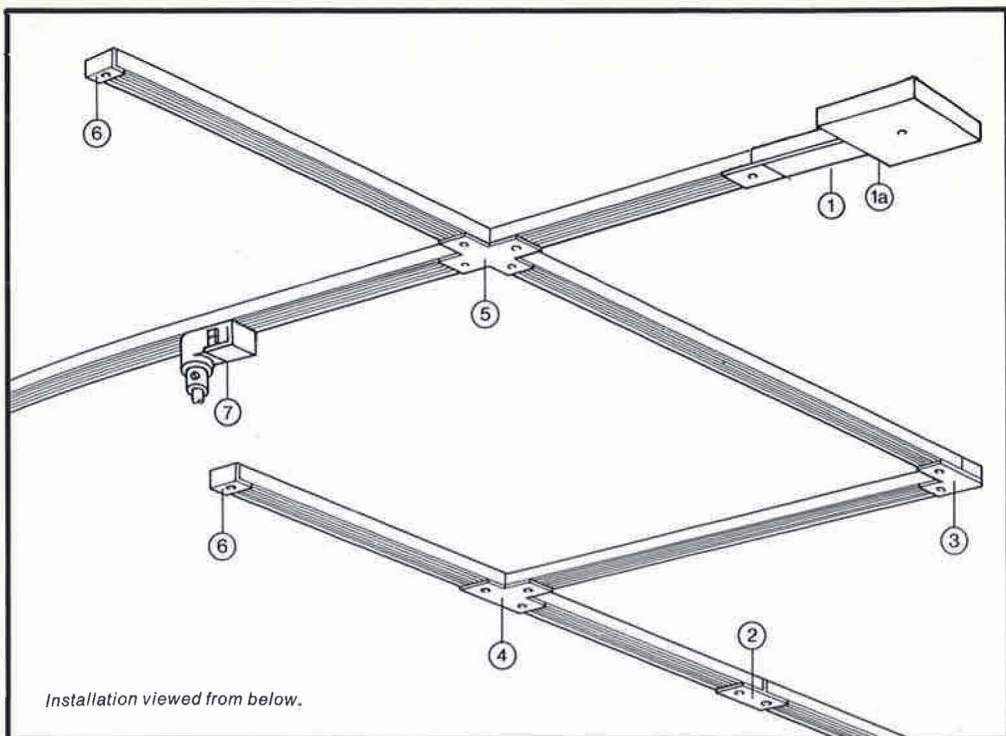
L Coupler RCS 655/06



T Coupler RCS 655/09



X Coupler RCS 655/11



Installation viewed from below.

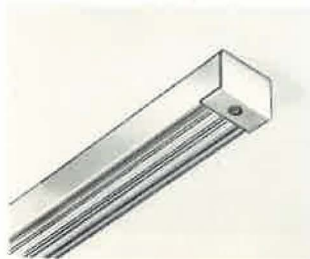
Guide to ordering

It is advisable to start installation from the Live End Connector (RCS 655/01) and ceiling plate/cover (RCS 655/00), if used.

The installation should be planned using this diagram as a guide.

Ceiling Plate RCS 655/00 may be used to terminate the track to cover a large wiring aperture. It has internal locations for up to four Live End Connectors at 90°, and is neatly finished by a square cover. For use only with Live End Connectors RCS 655/01.

| Key | Cat. No. | Description |
|-----|-------------|---------------------|
| 1 | RCS 655/01 | Live end connector |
| 1a | RCS 655/00 | Ceiling plate |
| 2 | RCS 655/08 | Straight coupler |
| 3 | RCS 655/06 | L coupler |
| 4 | RCS 655/09 | T coupler |
| 5 | RCS 655/11 | X coupler |
| 6 | RCS 655/04 | Dead end |
| 7 | RCS 655/12 | Loose adaptor |
| | RCS 655/100 | Lighting track 1-0m |
| | RCS 655/200 | Lighting track 2-0m |
| | RCS 655/300 | Lighting track 3-0m |



Dead End RCS 655/04



Ceiling plate RCS 655/00



Loose adaptor RCS 655/12 (including cord grip) is simply fitted by pressing adaptor at right angles onto track and turning it through 90° to left or right (depending on circuit required).

Display fittings for RCS 655 track

Six ranges of display fittings are detailed in Data Sheet PL 1857. The six ranges together with lamp shields, reflectors and accessories are listed below. These give a total of 61 variations around popular reflector lamps ranging from 40W to 150W. Complementary fittings for wall/ceiling mounting are available to match all types of track fittings. Details are contained in the Data Sheets listed in the following Table:-

| Track fitting | Complementary wall fitting | Data Sheet |
|---------------|----------------------------|------------|
| DRN 554 | DGN 550 | PL 1747 |
| RGS 06 | AGS 20 | PL 1711/3 |
| DRN 354 | DGN 350 | PL 1707/3 |
| DRN 494 | DGN 490 | PL 1295/2 |
| DRN 495 | DGN 491 | PL 1832/3 |
| DRN 124 | DGN 120 | PL 1855/1 |

All fittings are double insulated and constructed from durable, self-coloured synthetic materials with matching shields and reflectors, and are designed to comply with BSI and International Standards.

ORDERING DATA (FITTINGS)

| Catalogue No. | Description | Packing quantity | Suitable lamp types |
|--|---------------------------------------|------------------|---------------------|
| DRN 554 system | | | |
| DRN 554/20 | Knuckle display track fitting (white) | 4 | PAR 38*, R30, R20 |
| DRN 554/42 | Knuckle display track fitting (brown) | | |
| ZZZ 150/01 | Reflector for 60W lamp (white/clear) | 4 | 60W bowl reflector |
| ZZZ 150/02 | Reflector for 60W lamp (brown/clear) | | |
| ZZZ 150/11 | Reflector for 60W lamp (white/gold) | | |
| ZZZ 150/12 | Reflector for 60W lamp (brown/gold) | 4 | 100W bowl reflector |
| ZZZ 550/01 | Reflector for 100W lamp (white) | | |
| ZZZ 550/02 | Reflector for 100W lamp (brown) | | |
| RGS 06 system | | | |
| RGS 06/20 | Display track fitting (white) | 4 | PAR 38*, R30, R20 |
| RGS 06/42 | Display track fitting (brown) | | |
| GGG 04/301 | White/clear reflector | 4 | 100W bowl reflector |
| GGG 04/501 | Brown/clear reflector | | |
| Both above systems | | | |
| GGG 01/20 | Shield for R20 lamp (white) | 4 | R20 |
| GGG 01/42 | Shield for R20 lamp (brown) | | |
| GGG 02/20 | Shield for R30 lamp (white) | 4 | R30 |
| GGG 02/42 | Shield for R30 lamp (brown) | | |
| DRN 354 system | | | |
| DRN 354/20 | Basic display track fitting (white) | 4 | PAR 38*, R30, R20 |
| DRN 354/40 | Basic display track fitting (black) | | |
| ZZZ 350/00 | Reflector for 60W lamp | 4 | 60W bowl reflector |
| Accessories for PAR 38 in above systems | | | |
| W9622 | Screening ring (black) | 4 | |
| Mini Spotlights | | | |
| DRN 494/20 | White mini spot with shield | 8 | R16 |
| DRN 494/42 | Brown mini spot with shield | | |
| DRN 495/20 | White mini spot with 40W reflector | 8 | 40W bowl reflector |
| DRN 495/42 | Brown mini spot with 40W reflector | | |
| DRN 124/20 | White mini spot | 8 | R16 |
| DRN 124/42 | Brown mini spot | | |
| DRN 124/43 | Metallic bronze mini spot | | |

*Excluding PAR 38 Cool Spot.

Please order display fittings and accessories in multiples of the packing quantities. Note that lamps must be ordered separately.

ORDERING DATA (TRACK)

| Catalogue No. | Description | Diagram Code | Packing quantity |
|---------------|--------------------|--------------|------------------|
| RCS 655/100 | Lighting track 1m | — | 1 |
| RCS 655/200 | Lighting track 2m | — | 1 |
| RCS 655/300 | Lighting track 3m | — | 1 |
| RCS 655/01 | Live end connector | 1 | 1 |
| RCS 655/00 | Ceiling plate | 1a | 1 |
| RCS 655/08 | Straight coupler | 2 | 1 |
| RCS 655/06 | L coupler | 3 | 1 |
| RCS 655/09 | T coupler | 4 | 1 |
| RCS 655/11 | X coupler | 5 | 1 |
| RCS 655/04 | Dead end | 6 | 1 |
| RCS 655/12 | Loose adaptor | 7 | 1 |

Track: Made in Holland.
Fitting: Made in Holland.

| | |
|--------|---------------|
| CI/SIB | (63.2) |
| UDC | 696.6:628.976 |

DISPLAY FITTINGS

For RCS 655 Two Circuit Track

| | |
|----------------|----------------|
| DRN 554 | DRN 354 |
| RGS 06 | DRN 494 |
| DRN 495 | DRN 124 |

The fittings in six ranges are well designed and manufactured by Philips to set high standards of durability and versatility at realistic prices. They are used in conjunction with the RCS 655 shallow-depth track system, which has three independent conductors plus earth to permit two separately-switched circuits, and are supplied complete with slim-line adaptors to fit the track.

RANGE

DRN 554 system:

Knuckle spotlight track fittings in white or brown for PAR 38, R30 or R20 lamps, matching shields for R30 or R20 lamps, and matching parabolic reflectors for 60W and 100W bowl reflector lamps.

DRN 354 system:

Basic black or white spotlight track fittings for PAR 38 and R20 or R30 lamps and a parabolic reflector for 60W bowl reflector lamps.

RGS 06 system:

Spotlight track fittings in white or brown for PAR 38 lamps, matching shields for R30 and R20 lamps, and matching parabolic reflectors for 100W bowl reflector lamps.

DRN 494 & DRN 495

Mini spotlights in white or brown, with matching shield for R16 lamp or matching parabolic reflector for 40W bowl reflector lamp.

DRN 124

Stylish square mini spotlight in white, brown and metallic bronze, for R16 lamp.



Handbook Ref.

1.1.19

To reorder this data sheet quote 9.79 PL 1857/1

Replaces

PL 1857

APPLICATIONS

- Shop window display
- Shop interior display
- Assembly areas and workshops
- Museums and galleries
- Exhibition halls
- Foyers and reception areas
- Conference rooms
- Clubs, public houses and discotheques
- Restaurants
- Domestic effect lighting

FEATURES

- Display fittings are supplied complete with simple adaptors (unswitched and unfused) for mounting on the track; adaptors are simply turned through 90° either way to pick up the required circuit.
- Track fittings match wall/ceiling mounted fittings in Philips range to permit uniformity in lighting schemes.
- Easy-clean synthetic materials do not scratch or show fingerprints.
- Double-insulated for safety.
- Low-profile adaptors, combined with slim track, increase headroom and provide a neat, decorative appearance.

MATERIALS & FINISH

Body: Polysulphon (DRN 554); polycarbonate (DRN 354, RGS 06, DRN 494, DRN 495, DRN 124).

Reflectors: Brightened anodised aluminium, satin finish.

Lampholders: Porcelain ES.

RANGE OF OPERATION

For indoor use only.
100–250V.

SPECIFICATION

- Type compliance with BS 4533.
- All fittings have Class II electrical protection (double-insulated).

DRN 354 display system

- Clean, simply-styled fitting with compact lines provides effective lighting at low cost. The body is moulded in black or white polycarbonate.
- Wide field of adjustment through 330° horizontally and 85° vertically.
- Detachable ribbed collar is replaced with aluminium reflector when bowl reflector lamps are used.

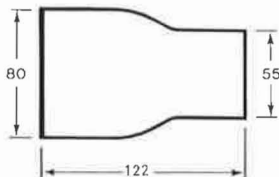


DRN 354/20 with PAR 38 lamp.

DISPLAY FITTING ACCESSORIES

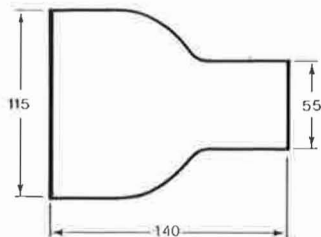
GG5 01

Shield for R20 lamp
suitable for RGS 06
and DRN 554 fitting

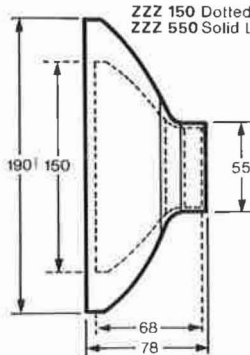


GG5 02

Shield for R30 lamp
suitable for RGS 06
and DRN 554 fitting.

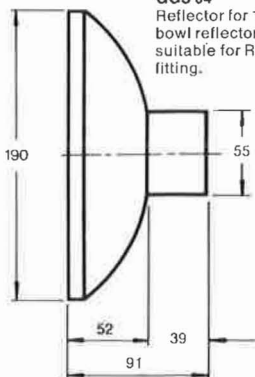


ZZZ 150 Dotted Line ZZZ 550 Solid Line



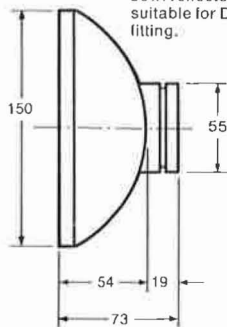
GG5 04

Reflector for 100W
bowl reflector lamp
suitable for RGS 06
fitting.



ZZZ 350

Reflector for 60W
bowl reflector lamp
suitable for DRN 354
fitting.



RGS 06 display system

- Knurled ring on body enables one-handed fine focussing of the GGS 04 reflector.
- Wide field of adjustment through 325° horizontally and 90° vertically.
- Robust, durable body moulded from polycarbonate, self-coloured white or brown.



RGS 06/20 with GGS 02/20 shield for R30 lamp. ▀



DRN 554 display system

- Attractive, functional styling embodies features built to a high specification.
- Fully adjustable through 330° horizontally, and 170° vertically, through an exceptionally large-diameter friction joint that does not require locking with a screwdriver.
- Strong and durable body moulded from polysulphon and polycarbonate self-coloured white or brown.
- Fine spot size control by reflector adjustment.

▀ DRN 554/42 with ZZZ 550/02 parabolic reflector and 100W lamp.

DRN 494 & DRN 495 mini spot system

- Compact, unobtrusive light sources using either the Philips R16 40W reflector lamp with shield, or a 40W bowl reflector lamp with parabolic reflector.
- Easily angled, with 180° horizontal and 90° vertical adjustment.
- Choice of white or brown polycarbonate basis with matching aluminium shields or parabolic reflectors.



DRN 495/20 with 40W bowl reflector lamp. ▀



DRN 124 mini spot system

- Small, stylish square mini spotlight using the Philips R16 40W reflector lamp.
- Easily angled, with 180° horizontal and 90° vertical adjustment.
- Choice of white, brown, or metallic bronze colours for dramatic effect.

▀ DRN 124/42 with R16 lamp.



DRN 124/42 with R16 lamp.



DRN 554/20 with PAR 38 lamp.



RGS 06/20 with GGS 01/20 shield for R20 lamp.



RGS 06/20 with GGS 04/301 parabolic reflector and 100W lamp.



DRN 354/20 with PAR 38 lamp.



DRN 354/40 with ZZZ 350/00 parabolic reflector and 60W lamp.



DRN 494/20 with R16 lamp



DRN 554/42 with GGS 02/42 shield for R30 lamp.



DRN 495/20 with 40W bowl reflector lamp.



DRN 554/20 with ZZZ 550/01 parabolic reflector and 100W lamp.

ORDERING DATA

| Catalogue No. | Description | Packing quantity | Suitable lamp types |
|--|---------------------------------------|------------------|---------------------|
| DRN 554 system | | | |
| DRN 554/20 | Knuckle display track fitting (white) | 4 | PAR 38*, R30, R20 |
| DRN 554/42 | Knuckle display track fitting (brown) | | |
| ZZZ 150/01 | 60W reflector (white/alum) | 4 | 60W bowl reflector |
| ZZZ 150/02 | 60W reflector (brown/alum) | | |
| ZZZ 150/11 | 60W reflector (white/gold) | 4 | 100W bowl reflector |
| ZZZ 150/12 | 60W reflector (brown/gold) | | |
| ZZZ 550/01 | 100W reflector (white/clear) | 4 | |
| ZZZ 550/02 | 100W reflector (brown/clear) | | |
| RGS 06 system | | | |
| RGS 06/20 | Display track fitting (white) | 4 | PAR 38*, R30, R20 |
| RGS 06/42 | Display track fitting (brown) | | |
| GGS 04/301 | 100W reflector (white/clear) | 4 | 100W bowl reflector |
| GGS 04/501 | 100W reflector (brown/clear) | | |
| Both above systems | | | |
| GGS 01/20 | Shield for R20 lamp (white) | 4 | R20 |
| GGS 01/42 | Shield for R20 lamp (brown) | | |
| GGS 02/20 | Shield for R30 lamp (white) | 4 | R30 |
| GGS 02/42 | Shield for R30 lamp (brown) | | |
| DRN 354 system | | | |
| DRN 354/20 | Basic display track fitting (white) | 4 | PAR 38*, R30, R20 |
| DRN 354/40 | Basic display track fitting (black) | | |
| ZZZ 350/00 | 60W reflector (alum/alum) | 4 | 60W bowl reflector |
| Accessories for black PAR 38 in above systems | | | |
| W9622 | Black screening ring | 4 | PAR 38 150W* |
| Mini Spotlights | | | |
| DRN 494/20 | White mini spot with shield | 8 | R16 |
| DRN 494/42 | Brown mini spot with shield | | |
| DRN 495/20 | White mini spot with 40W reflector | 8 | 40W bowl reflector |
| DRN 495/42 | Brown mini spot with 40W reflector | | |
| DRN 124/20 | White mini spot | 8 | R16 |
| DRN 124/42 | Brown mini spot | | |
| DRN 124/43 | Metallic bronze mini spot | | |

*Excluding PAR 38 Cool Spot.

Please order display fittings and accessories in multiples of the packing quantities. Note that lamps must be ordered separately.

Made in Holland